

Frank Harris & Co.



Thanet Street, WC1H

£646 Per week

A well-presented two double bedroom property ideal for sharers. Both bedrooms are large doubles and the accommodation also comprises; Reception room, fitted kitchen and modern bathroom.

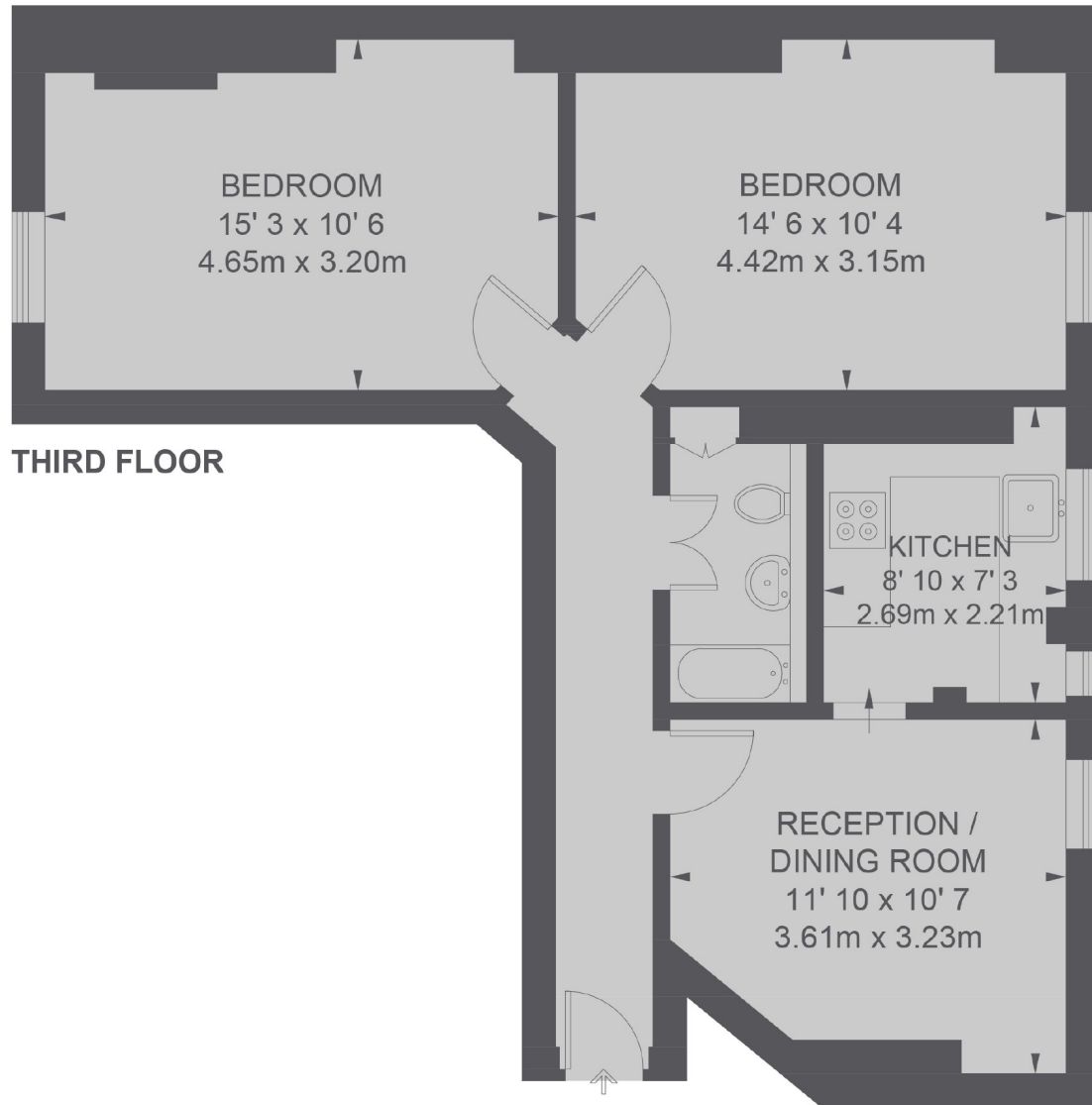


Thanet House is a stones throw away from both King's Cross/St Pancras stations. Local amenities can be found nearby at The Brunswick Shopping Centre and Pancras Square.

- Two double-bedrooms • Separate living room • Third-floor with lift •
 - Communal rooftop gardens • On-site caretaker • Furnished •
-



Frank Harris & Co.



TOTAL APPROX. FLOOR AREA 621 SQ. FT. (57.7 SQ. M.)

Frank Harris & Co. Bloomsbury and Kings Cross
81 Marchmont Street, London,
WC1N 1AL
020 7387 0077
bloomsburylettings@frankharris.co.uk

Energy Rating: E. We aim to make our particulars both accurate and reliable. However they are not guaranteed; nor do they form part of an offer or contract. If you require clarification on any points then please contact us, especially if you're traveling some distance to view. Please note that appliances and heating systems have not been tested and therefore no warranties can be given as to their good working order.

