

Frank Harris & Co.



Russell Court, WC1H

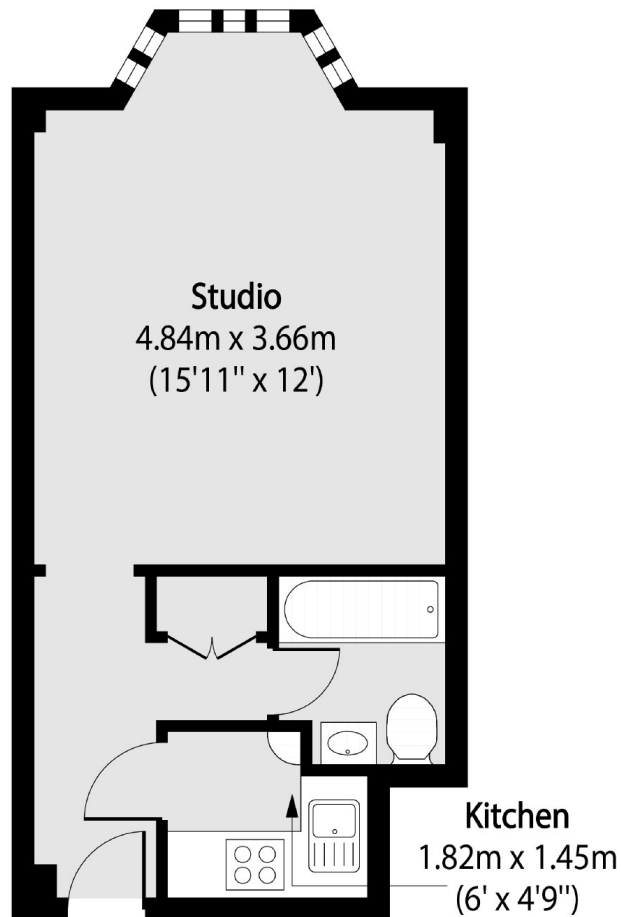
£325,000

Offered to the market is this studio flat set on the 5th floor. The property benefits from a large size living space, separate kitchen, 24-hour concierge and would be perfect as a London base or a main residence.

Located just off Russell Square there is easy access to tube stations the West End, Covent Garden and the Eurostar terminal at St Pancras. Also the Brunswick shopping centre with a Waitrose and many other shops and restaurants is just a moment away.

- Fifth Floor • Heating & Hot Water Included • 24-Hour Porter •
- Popular Mansion Block • Central Location • Lift Access •

Frank Harris & Co.



Total area (approx): 26.44 sq m (285 sq. ft)

Frank Harris & Co. Bloomsbury and Kings Cross
81 Marchmont Street,
London, WC1N 1AL
020 7405 4444
bloomsburysales@frankharris.co.uk

Energy Rating: C. We aim to make our particulars both accurate and reliable. However they are not guaranteed; nor do they form part of an offer or contract. If you require clarification on any points then please contact us, especially if you're traveling some distance to view. Please note that appliances and heating systems have not been tested and therefore no warranties can be given as to their good working order.

