

Frank Harris & Co.



King's Cross Road, WC1X

£646 Per week

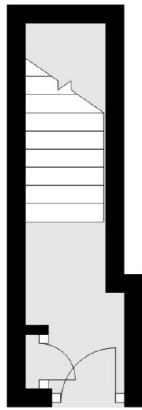
A well-proportioned and recently refurbished two double bedroom apartment ideally located in King's Cross. The property is bright, modern, and split level. Ideal for professional sharers or a couple who need a study.

Located just 0.2 miles from King's Cross Station and 0.7 miles to Angel Station. The property is surrounded by a selection of restaurants and coffee shops, but is also only 0.7 miles to Coal Drops Yard.

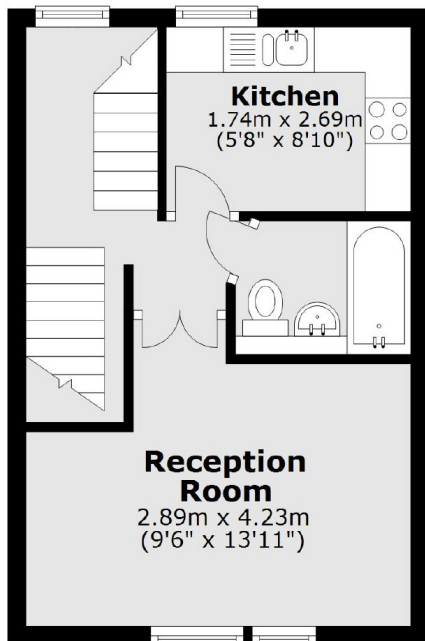
- Two Bedrooms • Recently Re-decorated • Split Level •
- Modern • Furnished • Central location •

Frank Harris & Co.

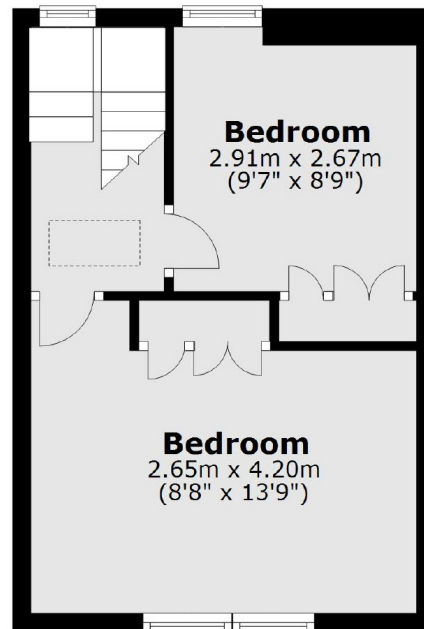
Ground Floor



First Floor



Second Floor



Total area: approx. 58.9 sq. metres (634.2 sq. feet)

Frank Harris & Co. Bloomsbury and Kings Cross
81 Marchmont Street, London,
WC1N 1AL
020 7387 0077
bloomsburylettings@frankharris.co.uk

Energy Rating: C. We aim to make our particulars both accurate and reliable. However they are not guaranteed; nor do they form part of an offer or contract. If you require clarification on any points then please contact us, especially if you're traveling some distance to view. Please note that appliances and heating systems have not been tested and therefore no warranties can be given as to their good working order.

