

Frank Harris & Co.



Bloomsbury, WC1N

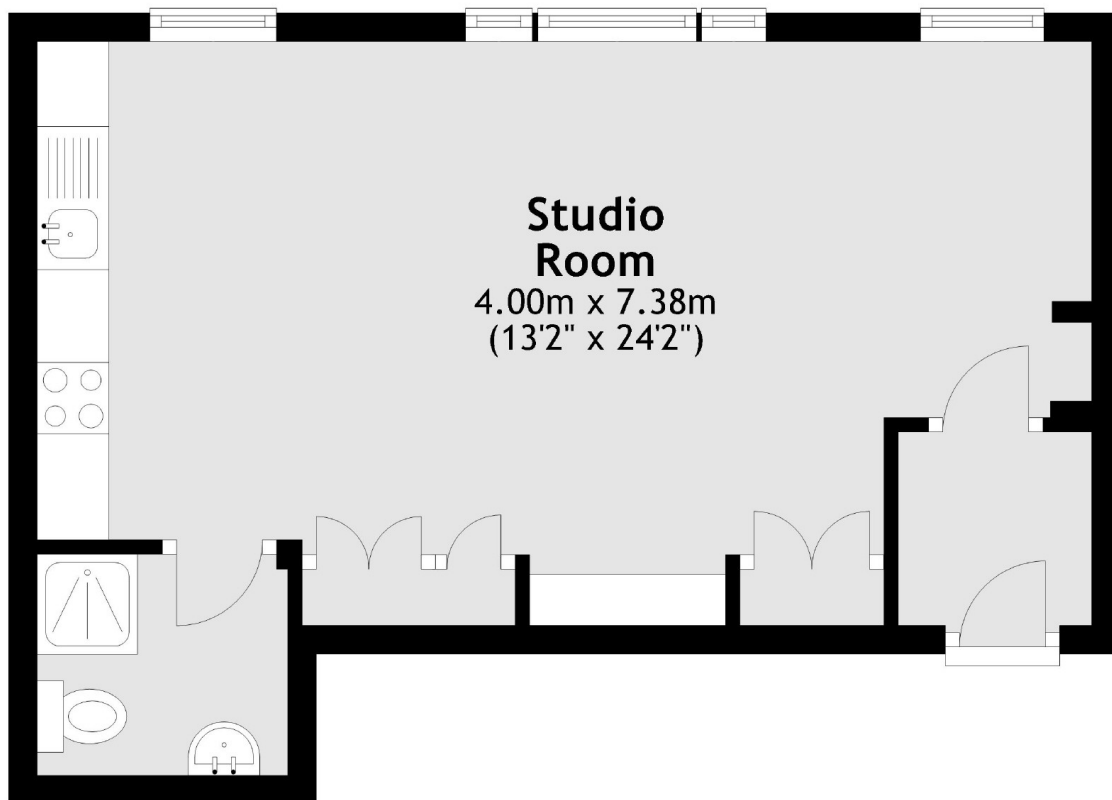
£438 Per week

A bright and spacious 2nd floor studio apartment located on a quiet side street in Bloomsbury. The property comprises of a large living area and wood flooring throughout.

New North Street is located close to Russell Square and Queen Square Gardens. Russell Square station is 0.5 miles away and Holborn Station is 0.3 miles away.

- Studio • Furnished • One Bathroom •
- Wooden floors • Central location • Close transport links •

Frank Harris & Co.



Total area: approx. 31.9 sq. metres (343.8 sq. feet)

Frank Harris & Co. Bloomsbury and Kings Cross
81 Marchmont Street, London,
WC1N 1AL
020 7387 0077
bloomsburylettings@frankharris.co.uk

Energy Rating: C. We aim to make our particulars both accurate and reliable. However they are not guaranteed; nor do they form part of an offer or contract. If you require clarification on any points then please contact us, especially if you're traveling some distance to view. Please note that appliances and heating systems have not been tested and therefore no warranties can be given as to their good working order.

