

# Frank Harris & Co.



**Bloomsbury, WC1X**

**£807 Per week**

An extremely spacious (1000 sqft) two bedroom property situated on the 5th floor of this attractive mansion block perfectly located for both the West End and the City. The property comprises two very spacious bedrooms and a further lounge area, recently fitted separate kitchen and bathroom.

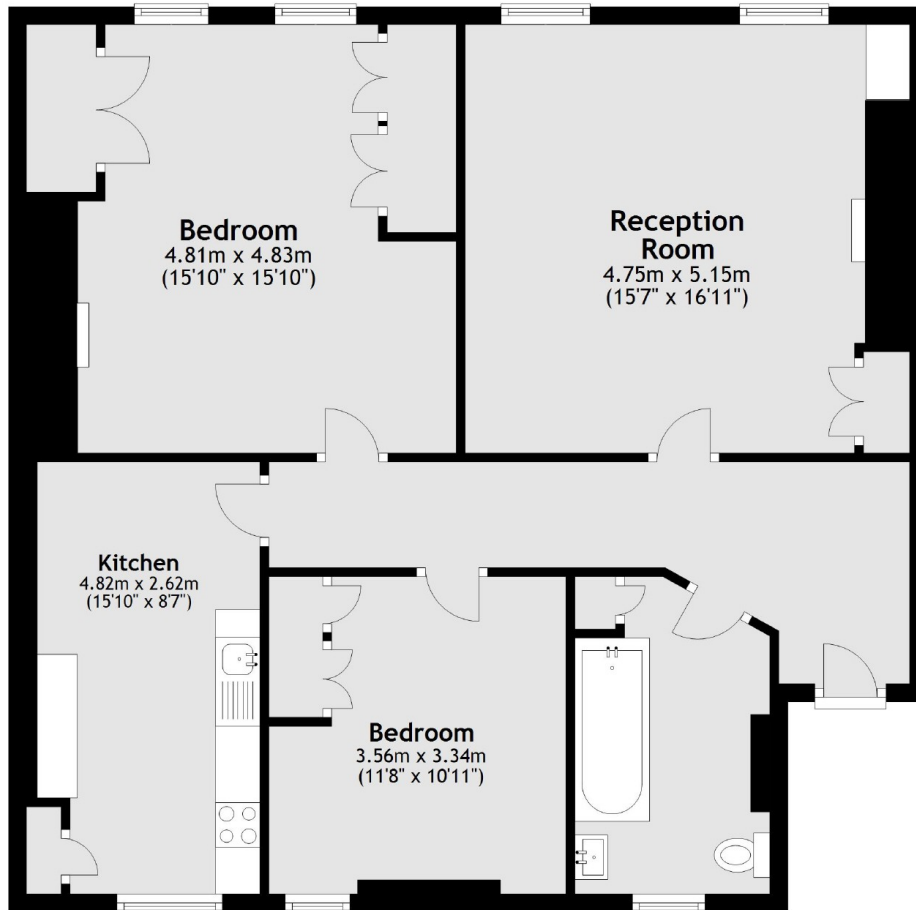


Churston Mansions is a stunning re-brick mansion building on Gray's Inn Road with a 3rd wave coffee shop across the road and a selection of eateries the property is ideally located. Russell Square, Chancery Lane, and Farringdon Stations are all 0.6 miles away.

- High ceilings • Modern fixtures • 1000 square foot •
- Two bedrooms • 5th floor (lift) • Available immediately •



# Frank Harris & Co.



Total area: approx. 93.2 sq. metres (1003.5 sq. feet)

Frank Harris & Co. Bloomsbury and Kings Cross  
81 Marchmont Street, London,  
WC1N 1AL  
020 7387 0077  
bloomsburylettings@frankharris.co.uk

Energy Rating: C. We aim to make our particulars both accurate and reliable. However they are not guaranteed; nor do they form part of an offer or contract. If you require clarification on any points then please contact us, especially if you're traveling some distance to view. Please note that appliances and heating systems have not been tested and therefore no warranties can be given as to their good working order.

