

# Frank Harris & Co.



## Queen Alexandra Mansions, WC1H

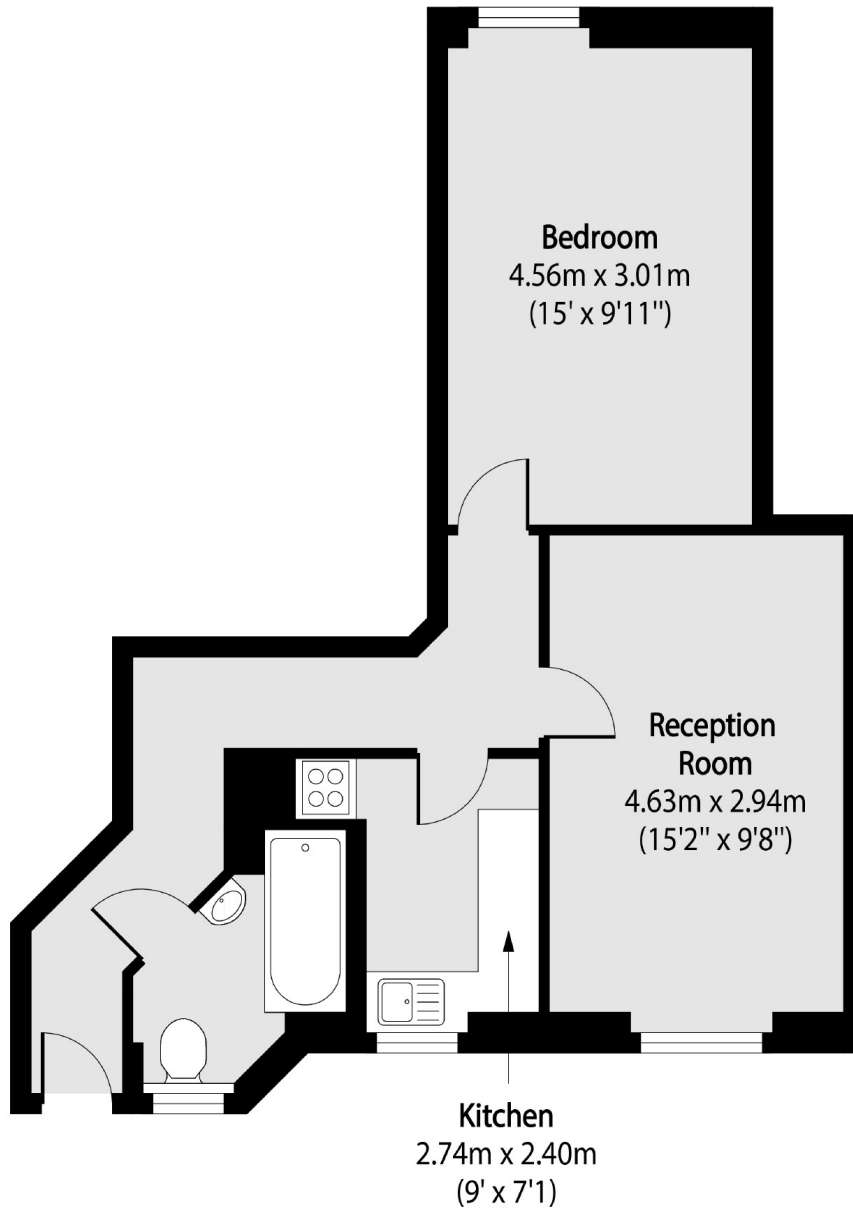
£500,000

Introducing this very large one bedroom on the ground floor with its own private entrance. Located in a red brick mansion block, this apartment, over 500 sq.ft, benefits from being share of the freehold, having a caretaker, lift and communal roof terrace with stunning London views

Queen Alexandra Mansions is a very short walk from Kings Cross/ St Pancras Stations and from The Brunswick Centre where you can find local amenities. Covent Garden and the West End is also within close proximity.

- Share Of The Freehold • Central Location • Large One Bedroom •
- Mansion Block • Caretaker • No Onward Chain •

# Frank Harris & Co.



Total area (approx): 47.79 sq m (514 sq. ft)

Frank Harris & Co. Bloomsbury and Kings Cross  
81 Marchmont Street,  
London, WC1N 1AL  
020 7405 4444  
bloomsburysales@frankharris.co.uk

Energy Rating: C. We aim to make our particulars both accurate and reliable. However they are not guaranteed; nor do they form part of an offer or contract. If you require clarification on any points then please contact us, especially if you're traveling some distance to view. Please note that appliances and heating systems have not been tested and therefore no warranties can be given as to their good working order.

