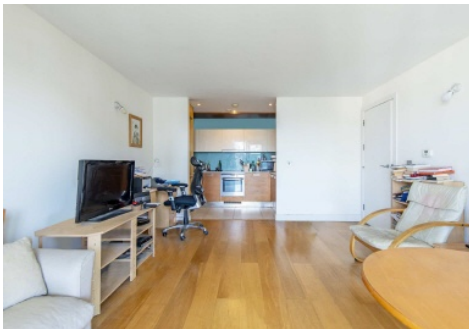


Frank Harris & Co.



St. Williams Court, N1

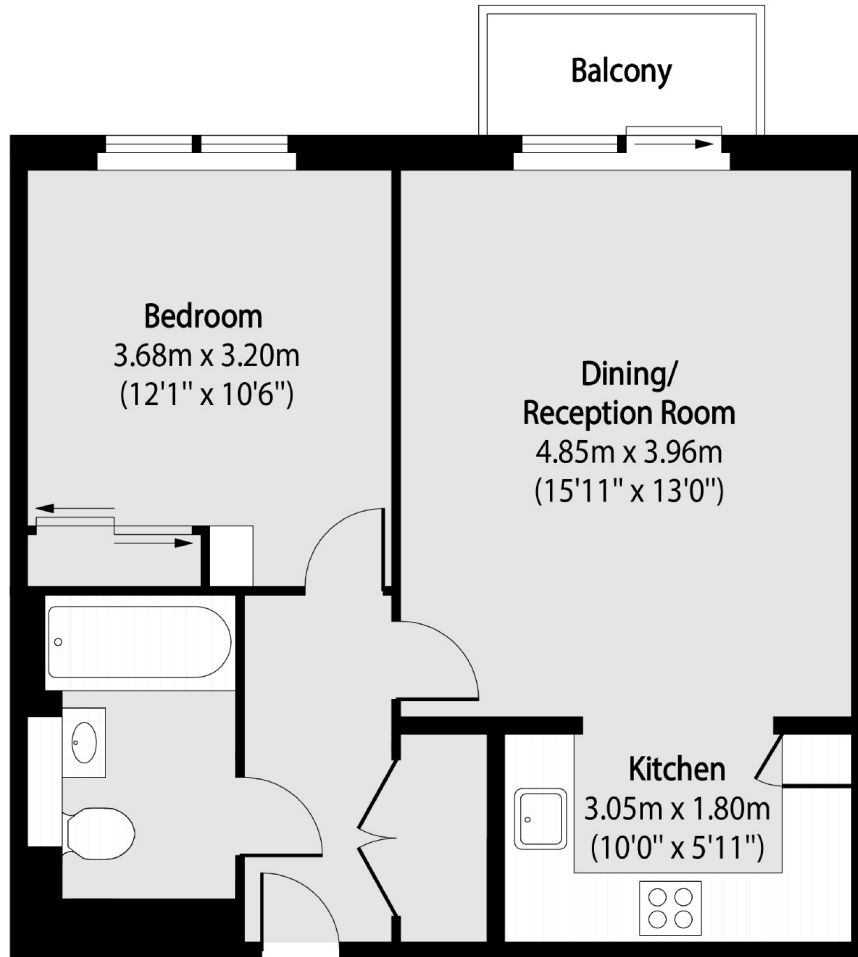
£475,000

Introducing this large one bedroom on the fourth floor in a ported development. Over 500 sq.ft this good conditioned apartment benefits from an open-plan, private balcony and comprises of a large double bedroom. Key features include no onward chain, a concierge as well as gym facilities.

Gifford Street is ideally located enjoying the benefits of the remote location of Bingfield Park in Islington, but also having the access to King's Cross Station, a short walk away from Central London.

- No Onward Chain • Concierge • Private Balcony •
- Shared Garden • Gym Facilities • Fourth Floor •

Frank Harris & Co.



Total area (approx): 48.49 sq m (522 sq. ft)

Balcony total area (approx): 2.51 sq m (27 sq. ft)

Frank Harris & Co. Bloomsbury and Kings Cross
81 Marchmont Street,
London, WC1N 1AL
020 7405 4444
bloomsburysales@frankharris.co.uk

Energy Rating: B. We aim to make our particulars both accurate and reliable. However they are not guaranteed; nor do they form part of an offer or contract. If you require clarification on any points then please contact us, especially if you're traveling some distance to view. Please note that appliances and heating systems have not been tested and therefore no warranties can be given as to their good working order.

