

Frank Harris & Co.



Great Ormond Street, WC1N

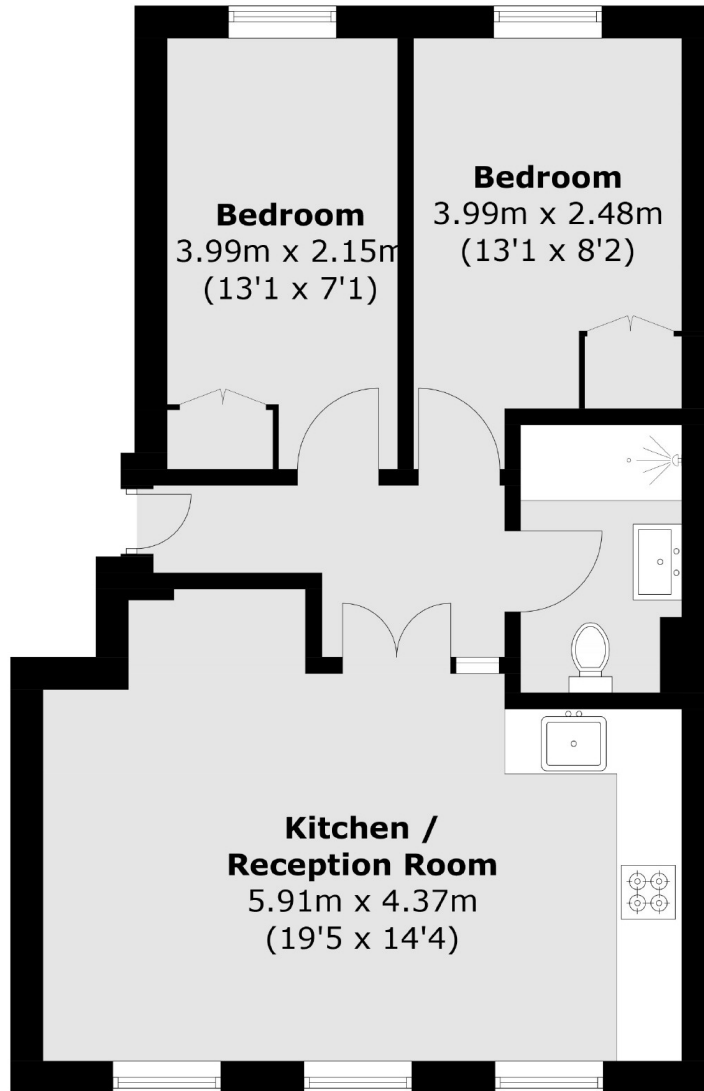
£875,000

A two bedroom flat on the second floor of an impressive Georgian townhouse. The property has been modernised throughout and consists of a re-fitted bathroom, kitchen and living room. This property boasts of natural light and benefits from no onward chain.

Situated on one of the best streets in Bloomsbury, just off Lamb's Conduit Street and close by an array of independent shops and restaurants. Close to Holburn and Russell Square stations where excellent transport links can be found. Brunswick Centre is also situated close by.

- Period Property • No Chain • Georgian Townhouse •
- Treelined Street • Excellent Location • Grade Two Listed •

Frank Harris & Co.



Total area (approx.): 49.5 sq. m (532.8 sq. ft)

Frank Harris & Co. Bloomsbury and Kings Cross
81 Marchmont Street,
London, WC1N 1AL
020 7405 4444
bloomsburysales@frankharris.co.uk

Energy Rating: C. We aim to make our particulars both accurate and reliable. However they are not guaranteed; nor do they form part of an offer or contract. If you require clarification on any points then please contact us, especially if you're traveling some distance to view. Please note that appliances and heating systems have not been tested and therefore no warranties can be given as to their good working order.

