

Frank Harris & Co.



Riverside, WC1H

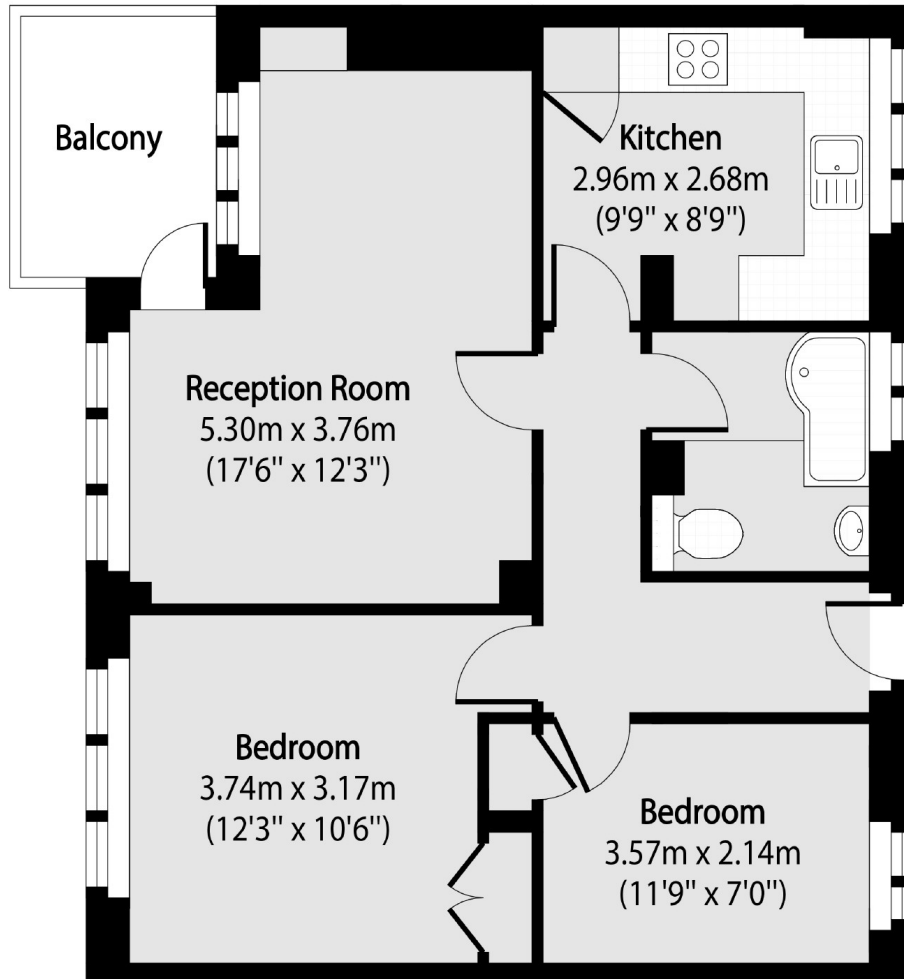
£475,000

A modern well presented second floor two bedroom apartment. The property offers a large L-shaped reception with dining area and access to a south facing balcony, new bathroom suite and kitchen with fully integrated appliances and wood flooring. The flat benefits from no onward chain and secure fobbed access.

Birkenhead Street is ideally located with King's Cross Station only being a very short walk away. The property is situated adjacent to Argyle Square Gardens. The area is filled with an array of shops, local amenities and cafés providing an abundance of entertainment.

- Lift Access • No Chain • Private Balcony •
- 2nd Floor • Shared Garden • Secure Entrance •

Frank Harris & Co.



Total area (approx): 55.30 sq m (595 sq. ft)

Balcony total area (approx): 4.32 sq m (46 sq. ft)

Frank Harris & Co. Bloomsbury and Kings Cross
81 Marchmont Street,
London, WC1N 1AL
020 7405 4444
bloomsburysales@frankharris.co.uk

Energy Rating: D. We aim to make our particulars both accurate and reliable. However they are not guaranteed; nor do they form part of an offer or contract. If you require clarification on any points then please contact us, especially if you're traveling some distance to view. Please note that appliances and heating systems have not been tested and therefore no warranties can be given as to their good working order.

