

Frank Harris & Co.



Fitzrovia, W1T

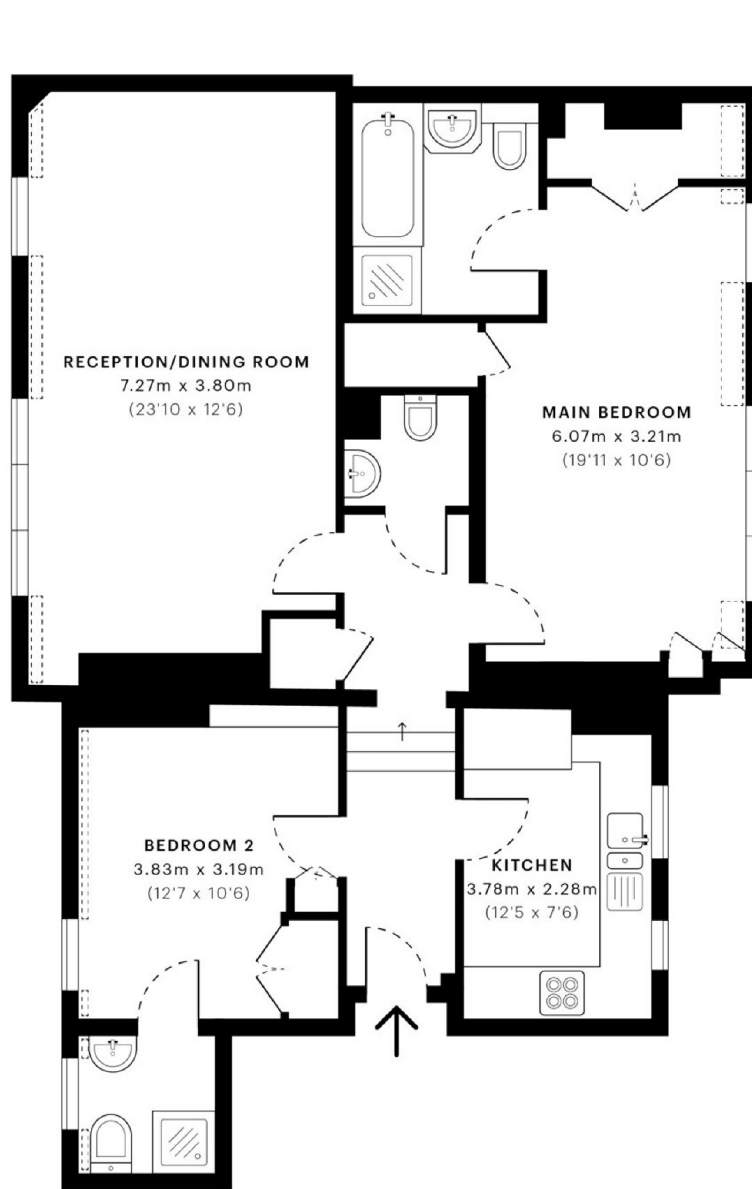
£761 Per week

A large and bright, top-floor apartment close to Oxford Street. The property consists of two double-bedrooms, two bathrooms, a large living room and separate kitchen.

1 Eastcastle Street is just 450 feet from Oxford Street but still calm and residential. There is a large variety of quality coffee shops, restaurants, and shops nearby.

- Two double-bedrooms • Two bathrooms • Day-time concierge •
- Top-floor with lift • Wooden flooring • Central location •

Frank Harris & Co.



— Fifth Floor

Frank Harris & Co. Bloomsbury and Kings Cross
81 Marchmont Street, London,
WC1N 1AL
020 7387 0077
bloomsburylettings@frankharris.co.uk

Energy Rating: D. We aim to make our particulars both accurate and reliable. However they are not guaranteed; nor do they form part of an offer or contract. If you require clarification on any points then please contact us, especially if you're traveling some distance to view. Please note that appliances and heating systems have not been tested and therefore no warranties can be given as to their good working order.