

Frank Harris & Co.



Bloomsbury, WC1X

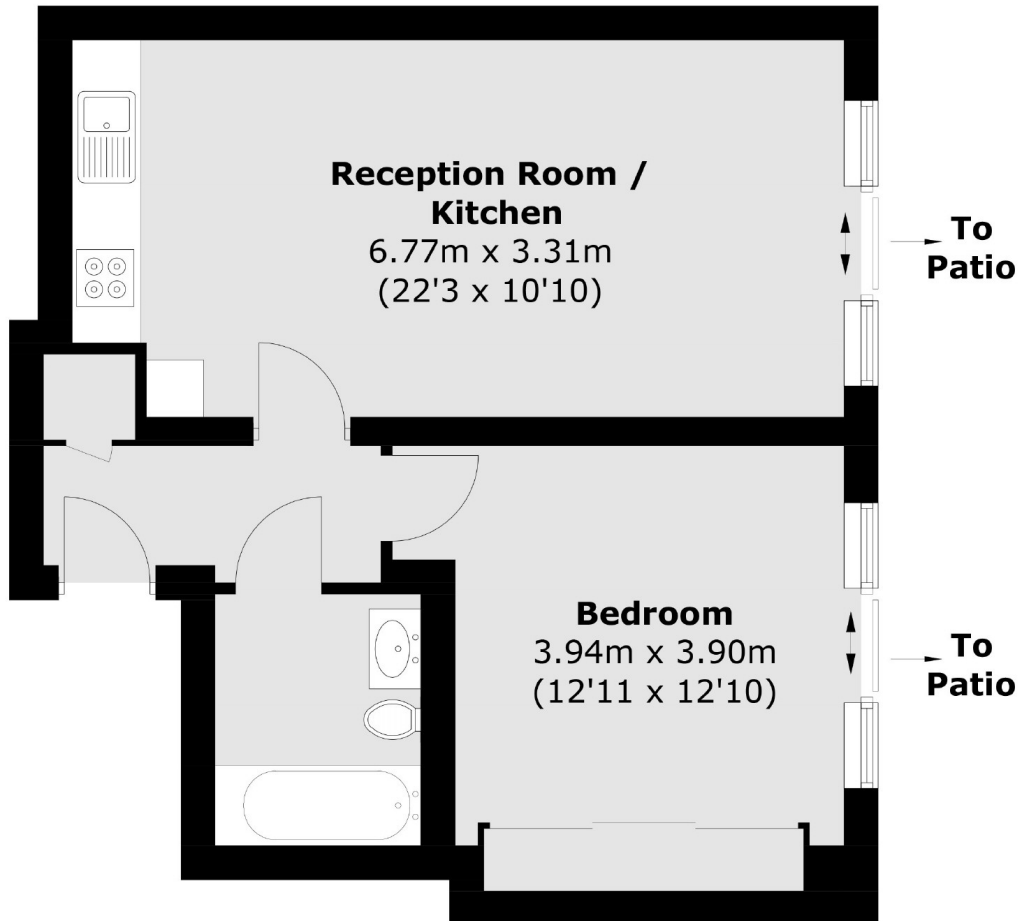
£576 Per week

Introducing this large one bedroom apartment in great condition and a central location. This property comprises of a large open plan reception area, one bedroom and one bathroom accompanied with a private terrace and a shared terrace.

Theobalds Road has several amenities located nearby including restaurants, bars, cafés, shops and cultural attractions. It is walking distance to both UCL and LSE universities. The development is located near to several transport links including Holborn Underground station, providing a valuable option for commuting towards the City and West End.

- Central Location • Lift Access • One-Bedroom •
- Private Terrace • Open-Plan • Shared Terrace •

Frank Harris & Co.



Total area (approx.): 46.7 sq. m (502.6 sq. ft)

Frank Harris & Co. Bloomsbury and Kings Cross
81 Marchmont Street, London,
WC1N 1AL
020 7387 0077
bloomsburylettings@frankharris.co.uk

Energy Rating: B. We aim to make our particulars both accurate and reliable. However they are not guaranteed; nor do they form part of an offer or contract. If you require clarification on any points then please contact us, especially if you're traveling some distance to view. Please note that appliances and heating systems have not been tested and therefore no warranties can be given as to their good working order.

