

# Frank Harris & Co.



## Bloomsbury, WC1H

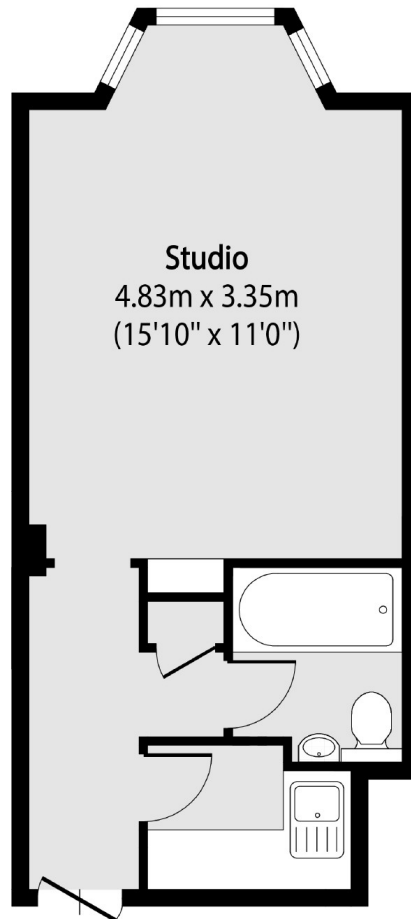
£305,000

Located on the third floor with lift access, this beautifully finished studio apartment has a separate kitchen, built in work station with storage above, bay window and fold down bed. The property would make a perfect London base or main residence.

Located just off Russell Square there is easy access to tube stations the West End, Covent Garden and the Eurostar terminal at St Pancras. Also the Brunswick shopping centre with a Waitrose and many other shops and restaurants is just a moment away.

- Share Of Freehold • 24 Hr Concierge • Lift Access •
- Built In Furniture • Excellent Condition • No Onward Chain •

# Frank Harris & Co.



Total area (approx): 24.15 sq m (260 sq. ft)

Frank Harris & Co. Bloomsbury and Kings Cross  
81 Marchmont Street,  
London, WC1N 1AL  
020 7405 4444  
[bloomsburysales@frankharris.co.uk](mailto:bloomsburysales@frankharris.co.uk)

Energy Rating: C. We aim to make our particulars both accurate and reliable. However they are not guaranteed; nor do they form part of an offer or contract. If you require clarification on any points then please contact us, especially if you're traveling some distance to view. Please note that appliances and heating systems have not been tested and therefore no warranties can be given as to their good working order.

