

# Frank Harris & Co.



## Jessel House, WC1H

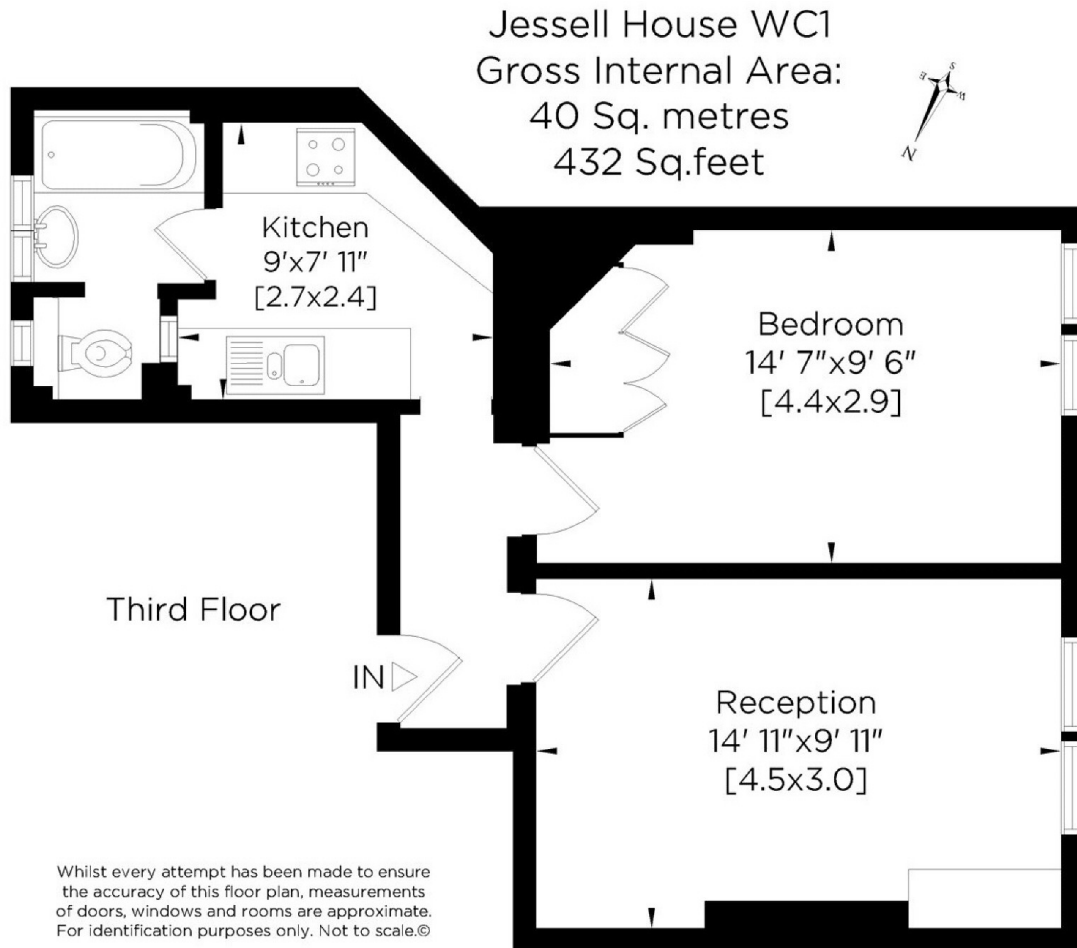
£484 Per week

A spacious one bedroom apartment situated on the 1st floor of a popular mansion block. Accommodation comprises; bright, good size reception, separate fully equipped kitchen, spacious double bedroom and bathroom.

Jessel House is centrally located and just moments to Kings Cross, Russell Square Underground and the amenities of the Brunswick Centre.

- One bedroom • Wooden flooring • Bright •
- Modern kitchen • Secure building • Central location •

# Frank Harris & Co.



Frank Harris & Co. Bloomsbury and Kings Cross  
81 Marchmont Street, London,  
WC1N 1AL  
020 7387 0077  
bloomsburylettings@frankharris.co.uk

Energy Rating: D. We aim to make our particulars both accurate and reliable. However they are not guaranteed; nor do they form part of an offer or contract. If you require clarification on any points then please contact us, especially if you're traveling some distance to view. Please note that appliances and heating systems have not been tested and therefore no warranties can be given as to their good working order.

