

Frank Harris & Co.



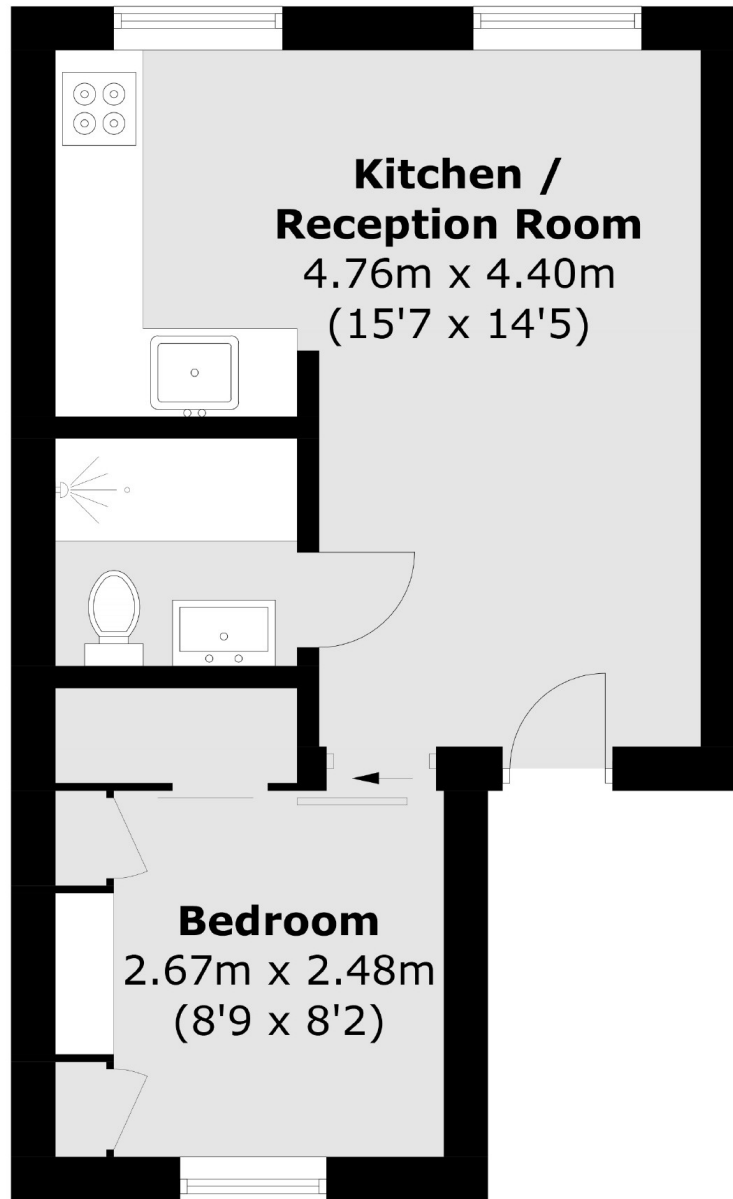
Bloomsbury, WC1X

£475,000

Introducing this stylish first floor one-bedroom in the heart of Bloomsbury. Beautifully refurbished, this apartment boasts lots of natural light, ample built-in storage and brand-new underfloor heating. The modern kitchen and bathroom have been updated to a high standard. Key features include high ceilings, a wall bed, period features, wooden flooring and a share of the freehold.

Gray's Inn Road is an extremely sought-after location, boasting an entertaining ambience. Local shops, pubs and an array of cafés can be found within walking distance. Transport links are easily accessible as King's Cross St. Pancras Station is moments away, which offers an abundance of underground links as well as national rail.

Frank Harris & Co.



Total area (approx.): 28.4 sq. m (305.7 sq. ft)

Frank Harris & Co. Bloomsbury and Kings Cross
81 Marchmont Street,
London, WC1N 1AL
020 7405 4444
bloomsburysales@frankharris.co.uk

Energy Rating: TBC. We aim to make our particulars both accurate and reliable. However they are not guaranteed; nor do they form part of an offer or contract. If you require clarification on any points then please contact us, especially if you're traveling some distance to view. Please note that appliances and heating systems have not been tested and therefore no warranties can be given as to their good working order.

