

Frank Harris & Co.



Bloomsbury, WC1R

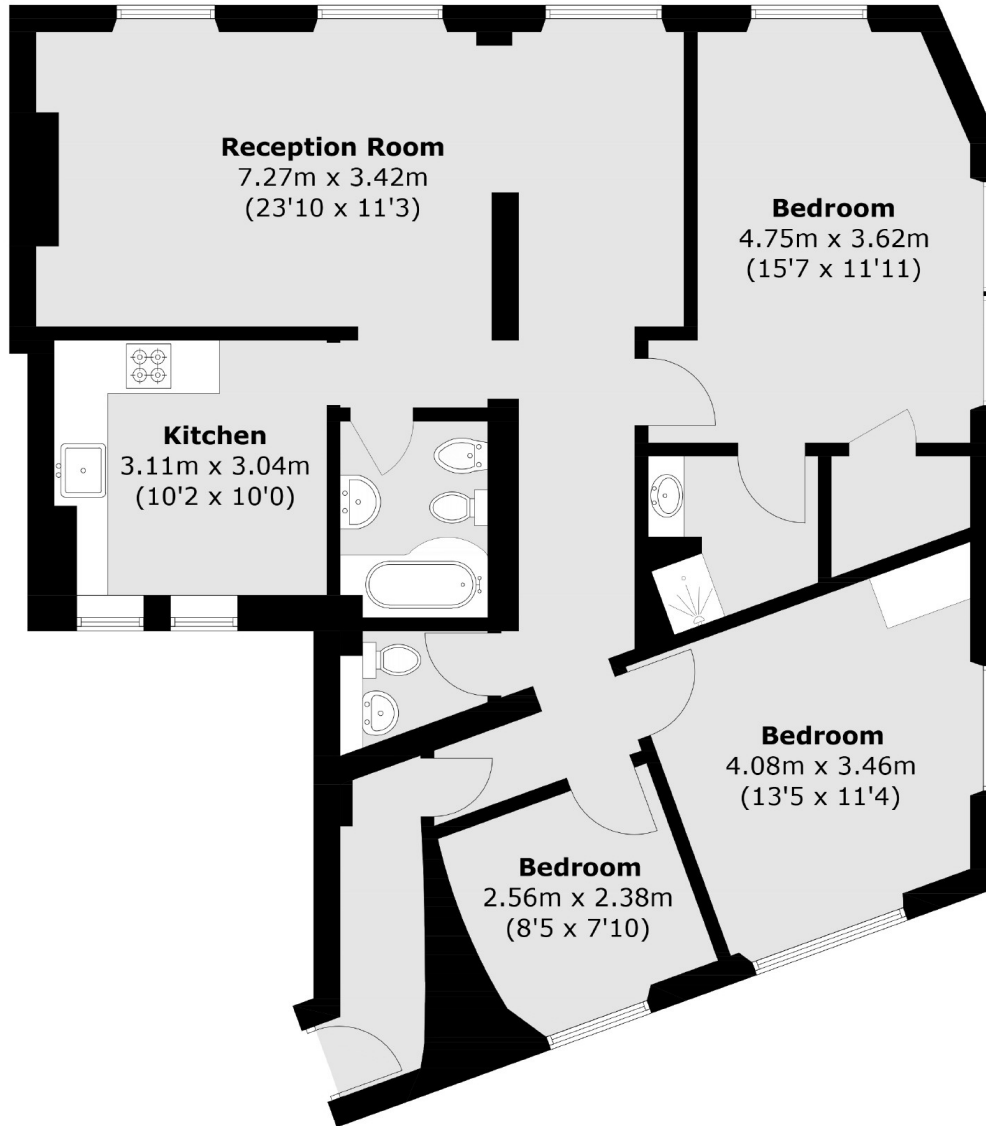
£900,000

This three double-bedroom property is situated on the second floor of this period corner building. Over 1,000 sq. Ft this apartment boasts high ceilings and an abundance of natural light, this property is sold with no onward chain.

Ideally located close to Lamb's Conduit Street is a partly-pedestrianised stretch of Bloomsbury with a village feel. The street, which enjoys good transport links, has many amenities and boutique shops.

- Central Location • No Onward Chain • Corner Building •
- Separate Kitchen • High Ceilings • Sash Windows •

Frank Harris & Co.



Total area (approx.): 97.6 sq. m (1,050.6 sq. ft)

Frank Harris & Co. Bloomsbury and Kings Cross
81 Marchmont Street,
London, WC1N 1AL
020 7405 4444
bloomsburysales@frankharris.co.uk

Energy Rating: D. We aim to make our particulars both accurate and reliable. However they are not guaranteed; nor do they form part of an offer or contract. If you require clarification on any points then please contact us, especially if you're traveling some distance to view. Please note that appliances and heating systems have not been tested and therefore no warranties can be given as to their good working order.

