

Frank Harris & Co.



Clerkenwell, WC1X

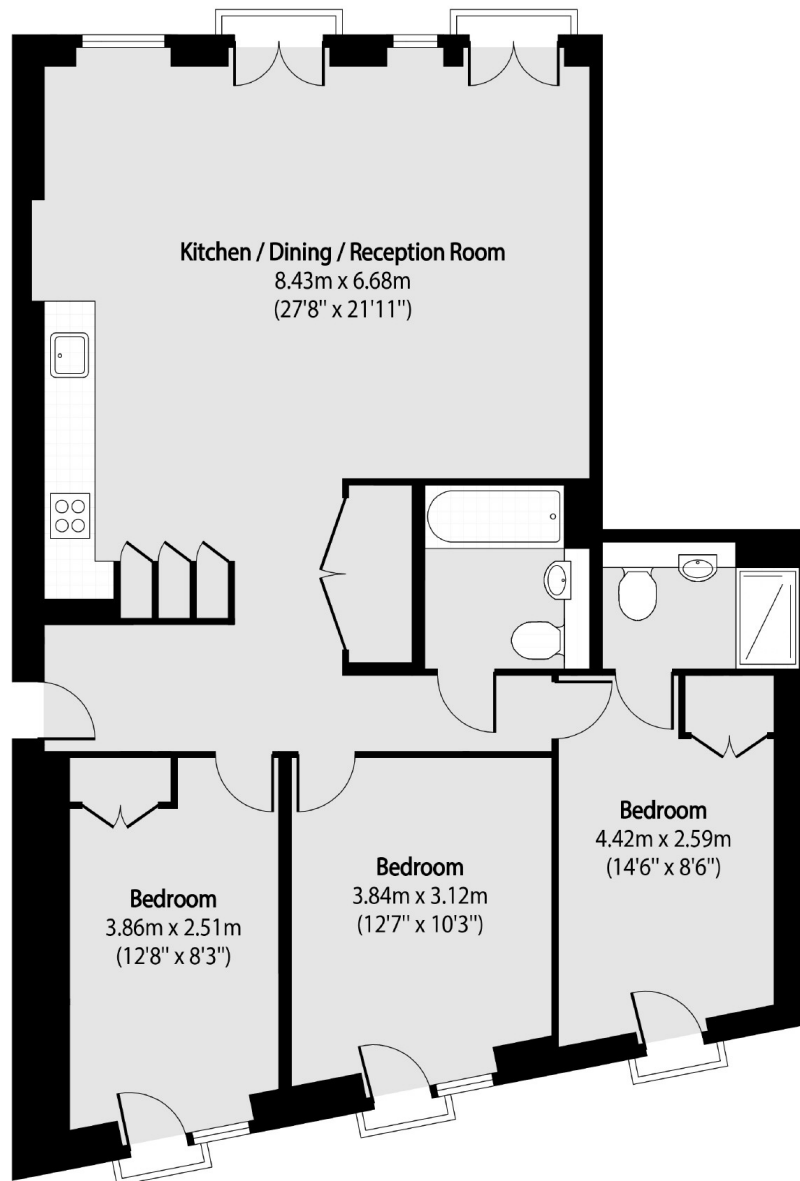
£1,500,000

A well-presented three-bedroom apartment in the Phoenix Place new build development. Offered to the market is a flat in excess of 1,000 sq.ft. That benefits from a resident wellness centre, gym, cinema, lounge and courtyard. The property comprises of three double bedrooms, two bathrooms and an open-plan reception area.

The Postmark development is perfectly connected with the city and central London and benefits from WC and EC locations. Farringdon Station is 0.8 miles away where the Elizabeth Line can be accessed. Exmouth market is a short walk away from where an array of entertainment can be found.

- New Build • 24-hour Concierge • Underfloor Heating •

Frank Harris & Co.



Total area (approx): 94.66 sq m (1019 sq. ft)

Frank Harris & Co. Bloomsbury and Kings Cross
81 Marchmont Street,
London, WC1N 1AL
020 7405 4444
bloomsburysales@frankharris.co.uk

Energy Rating: B. We aim to make our particulars both accurate and reliable. However they are not guaranteed; nor do they form part of an offer or contract. If you require clarification on any points then please contact us, especially if you're traveling some distance to view. Please note that appliances and heating systems have not been tested and therefore no warranties can be given as to their good working order.

