

# Frank Harris & Co.



## Bloomsbury, WC1H

£850,000

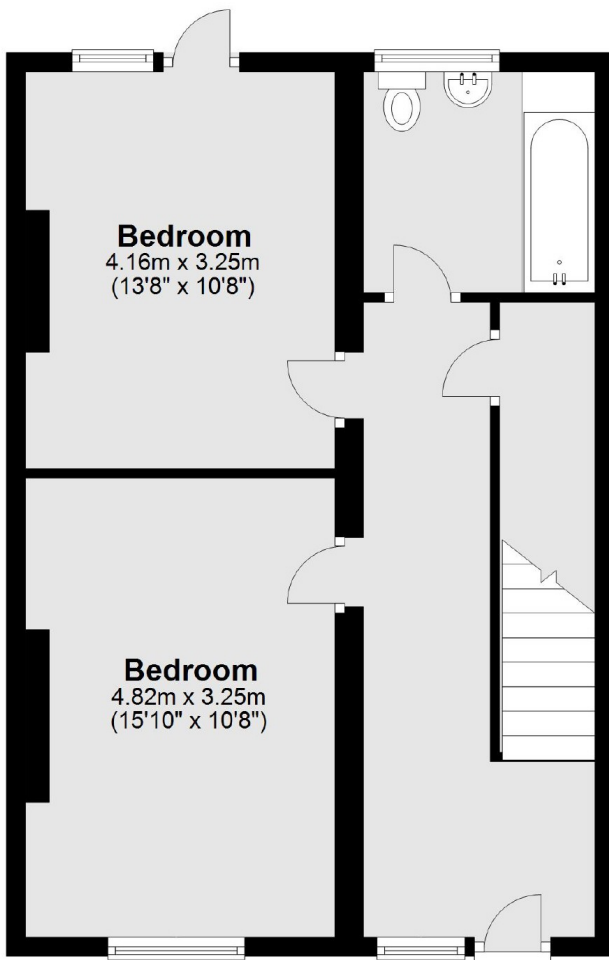
A large three bedroom split-level period flat. Approximately 1,000sq.ft this property is set over two floors and comprises of three bedrooms, a separate living room and kitchen. The bi-level apartment benefits from low service charge and a private garden.

Regent Square is sandwiched between two parks, namely St George's Gardens and Regent Square Gardens. Set in this remote but central location is a street which allows for excellent transport links as well as a vibrant atmosphere with shops, pubs and restaurants being walking distance away.

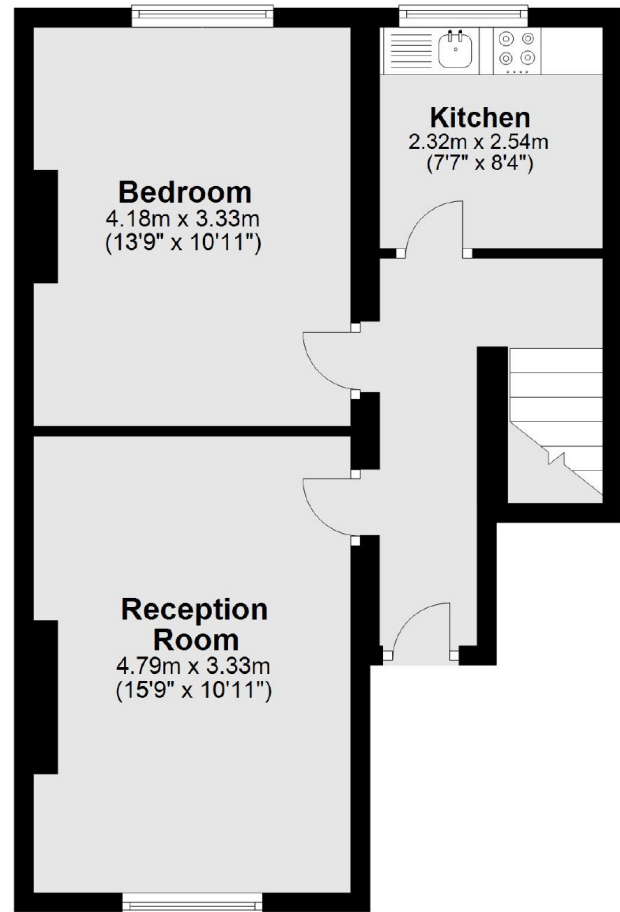
- Split-Level • Period Property • 1,000 sq.ft approx •
- Private Garden • Three Bedroom • Central Location •

# Frank Harris & Co.

## Lower Ground Floor



## Ground Floor



Total area: approx. 99.6 sq. metres (1072.2 sq. feet)

Frank Harris & Co. Bloomsbury and Kings Cross  
81 Marchmont Street,  
London, WC1N 1AL  
020 7405 4444  
bloomsburysales@frankharris.co.uk

Energy Rating: D. We aim to make our particulars both accurate and reliable. However they are not guaranteed; nor do they form part of an offer or contract. If you require clarification on any points then please contact us, especially if you're traveling some distance to view. Please note that appliances and heating systems have not been tested and therefore no warranties can be given as to their good working order.