

Frank Harris & Co.



Holborn, WC2B

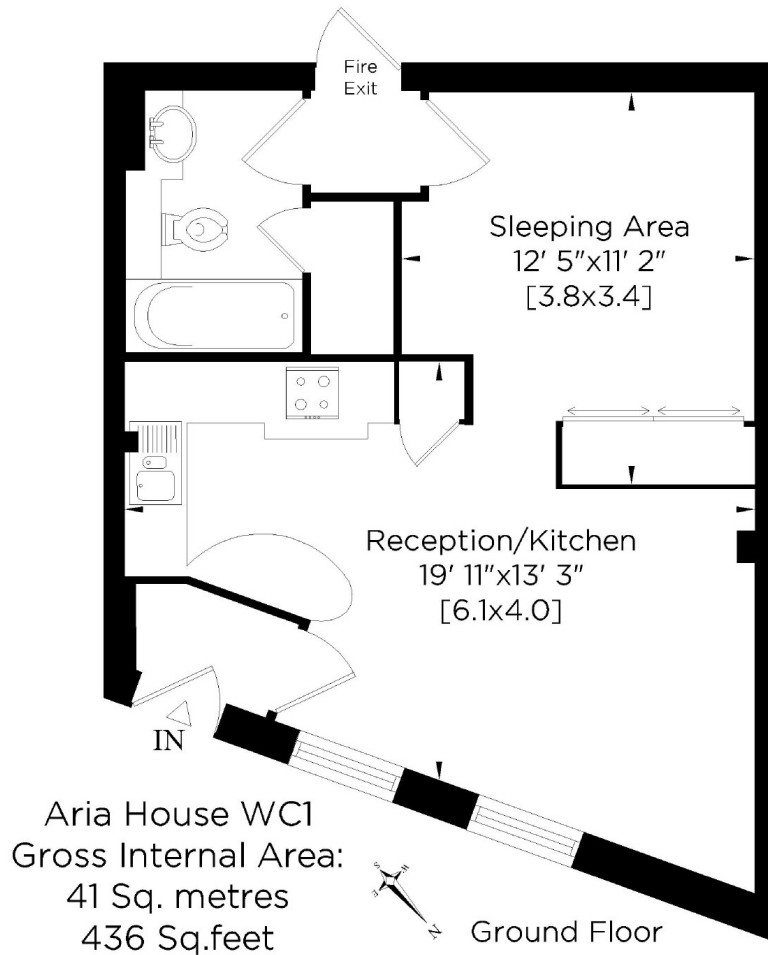
£426 Per week

A stylish and extremely quiet one-bedroom apartment beautifully presented and ideally located for both the City, West End & Covent Garden. The apartment has wood flooring throughout, good quality kitchen & bathroom, quiet location, ample storage & outside dining area.

Aria House is conveniently situated near the Holborn and Covent Garden underground stations, placing it right in the vibrant heart of Covent Garden. This prime location grants easy access to a plethora of excellent shopping options, theatres, restaurants, and transportation services.

- One-Bedroom • Prime Location • Close to Transport Links •
- Wood-Flooring Throughout • Modern Finish • Ample Storage •

Frank Harris & Co.



Whilst every attempt has been made to ensure the accuracy of this floor plan, measurements of doors, windows and rooms are approximate. For identification purposes only. Not to scale. © www.steele.london - Email: Info@steele.london - Tel: 07847 219401

Frank Harris & Co. Bloomsbury and Kings Cross
81 Marchmont Street, London,
WC1N 1AL
020 7387 0077
bloomsburylettings@frankharris.co.uk

Energy Rating: C. We aim to make our particulars both accurate and reliable. However they are not guaranteed; nor do they form part of an offer or contract. If you require clarification on any points then please contact us, especially if you're traveling some distance to view. Please note that appliances and heating systems have not been tested and therefore no warranties can be given as to their good working order.

