

Frank Harris & Co.



Warwick Court, WC1R

£1,200,000

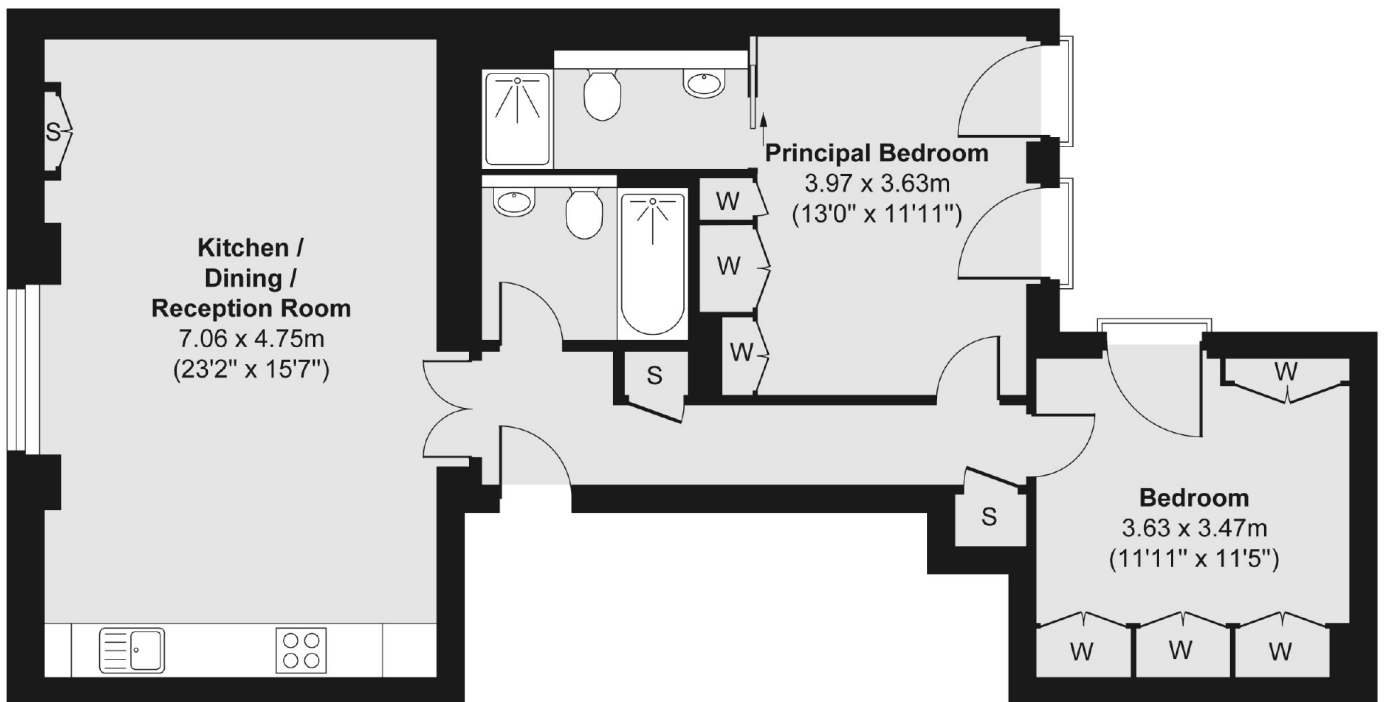
This first floor apartment has been completely refurbished and finished to an extremely high standard throughout, the accommodation consists of an impressive open-plan kitchen living room, two double bedrooms with one en-suite and a family bathroom.

Chancery Lane station is just a 3 minute walk away where Holborn is just 6 minutes. Covent Garden station is 15 minutes' walk away which gets you on the Piccadilly Line.

- Two Double Bedrooms • Two Bathrooms • Recently Renovated •
- Quiet Street • Central Location • Air Conditioning •

Frank Harris & Co.

First Floor



Total area (approx.) 76.20 sq. m (820 sq. ft)

Frank Harris & Co. Bloomsbury and Kings Cross
81 Marchmont Street,
London, WC1N 1AL
020 7405 4444
bloomsburysales@frankharris.co.uk

Energy Rating: C. We aim to make our particulars both accurate and reliable. However they are not guaranteed; nor do they form part of an offer or contract. If you require clarification on any points then please contact us, especially if you're traveling some distance to view. Please note that appliances and heating systems have not been tested and therefore no warranties can be given as to their good working order.