

# Frank Harris & Co.



## Ampton Street, WC1X

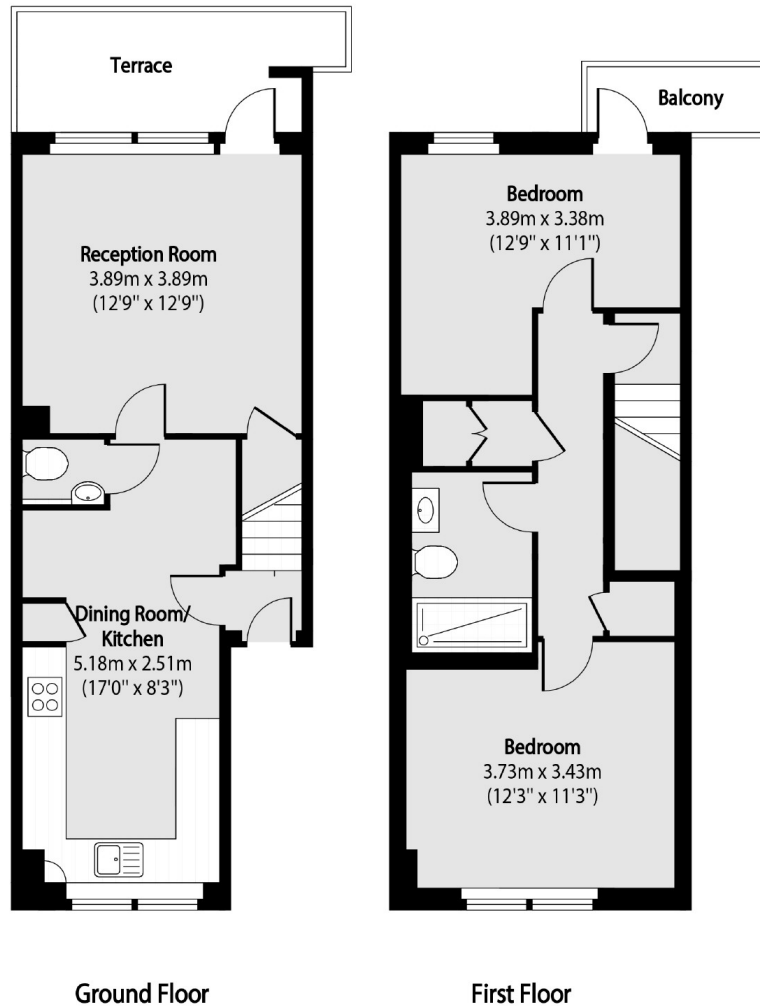
£700,000

This split-level apartment has been beautifully modernised. The flat set over two floors comprises of two large bedrooms, a reception room, a separate kitchen and an additional W/C. Shy of 800 sq.ft the property benefits from two balconies and low service charges.

Ampton Street is surrounded by King's Cross and Bloomsbury, the pedestrianised road allows for a quieter sought after location. The flat has great transport links as it is near King's Cross Station, Russell Square and Farringdon Station.

- Central Location • Two Balconies • Split-Level •
- Two Bedrooms • 792 sq.ft • Excellent Transport Links •

# Frank Harris & Co.



Total area (approx): 73.58 sq m (792 sq. ft)

Terrace total area (approx): 7.15 sq m (77 sq. ft)

Balcony total area (approx): 2.32 sq m (25 sq. ft)

Frank Harris & Co. Bloomsbury and Kings Cross  
81 Marchmont Street,  
London, WC1N 1AL  
020 7405 4444  
bloomsburysales@frankharris.co.uk

Energy Rating: D. We aim to make our particulars both accurate and reliable. However they are not guaranteed; nor do they form part of an offer or contract. If you require clarification on any points then please contact us, especially if you're traveling some distance to view. Please note that appliances and heating systems have not been tested and therefore no warranties can be given as to their good working order.