

Frank Harris & Co.



Bloomsbury, WC1H

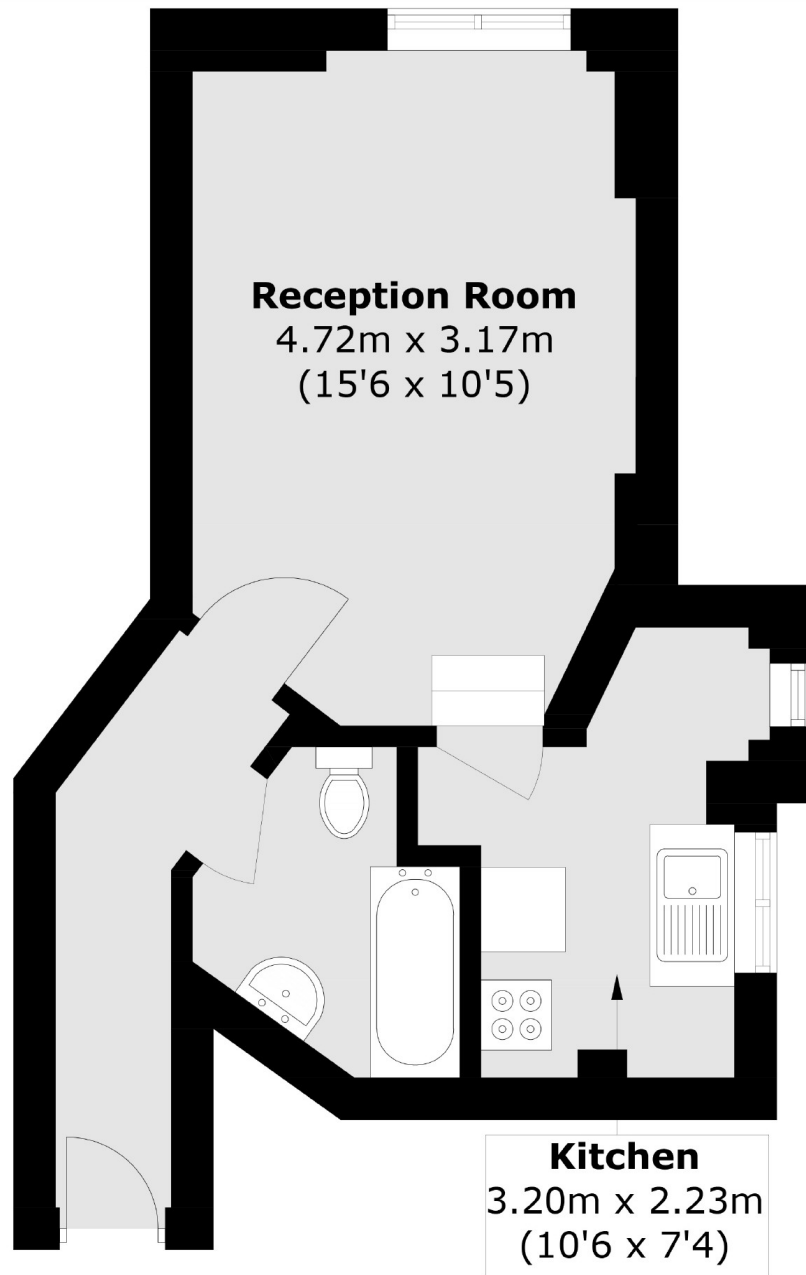
£350,000

This large studio set in an Edwardian mansion block. Over 300 sq.ft this property comprises of a large reception/bedroom and a separate kitchen. The apartment benefits from with no onward chain, a caretaker and share of freehold.

Thanet Street is near Kings Cross and St Pancras stations, with excellent transport links across London, Great Britain and Europe via Eurostar. Covent Garden is not far away, and an array of shops can be found around the corner on Marchmont Street.

- Period Mansion Block • Large Studio • Share Of The Freehold •
- No Chain • 900 + Years • Caretaker •

Frank Harris & Co.



Total area (approx.): 28.3 sq. m (304.6 sq. ft)

Frank Harris & Co. Bloomsbury and Kings Cross
81 Marchmont Street,
London, WC1N 1AL
020 7405 4444
bloomsburysales@frankharris.co.uk

Energy Rating: D. We aim to make our particulars both accurate and reliable. However they are not guaranteed; nor do they form part of an offer or contract. If you require clarification on any points then please contact us, especially if you're traveling some distance to view. Please note that appliances and heating systems have not been tested and therefore no warranties can be given as to their good working order.