

# Frank Harris & Co.



## Bloomsbury, WC1H

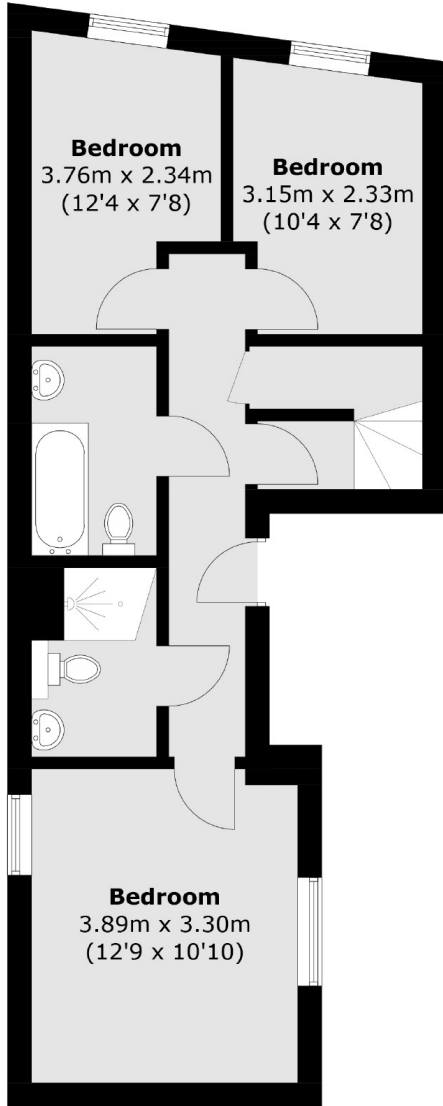
£800,000

Introducing this large three bedroom split-level flat. Set in a remote part of Bloomsbury this converted warehouse apartment is over 1,000 sq.ft. Key features including private terrace and a long lease.

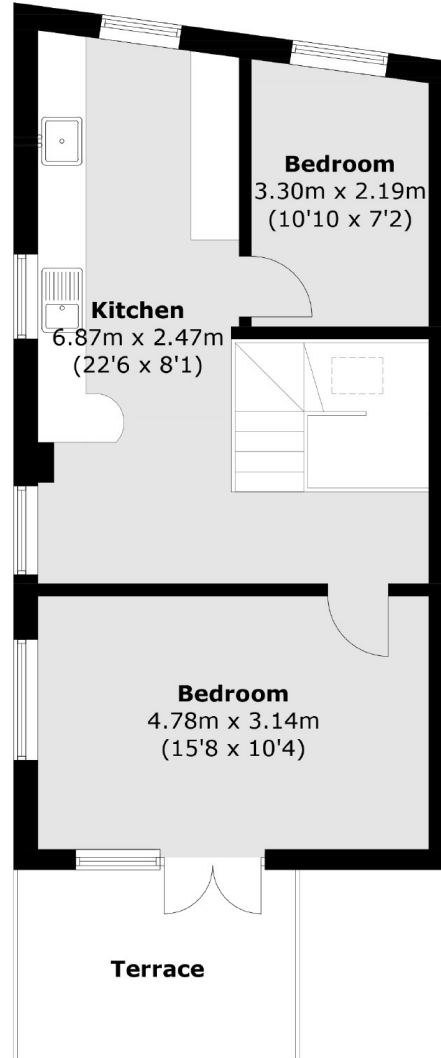
Argyle Walk is located on a tree-lined pedestrianised walk, tucked away from the hustle and bustle yet only a stone's throw from King's Cross/St Pancras International station. The local shopping amenities and restaurants of Bloomsbury and the West End are all nearby.

- No Chain • 1,000 sq.ft + • Split-Level •
- Warehouse Conversion • Private Terrace • Leasehold •

# Frank Harris & Co.



**First Floor**



**Second Floor**

Total area (approx.): 96.2 sq. m (1035.5 sq. ft)  
Terrace : 8.5 sq. m (91.5 sq. ft)

Frank Harris & Co. Bloomsbury and Kings Cross  
81 Marchmont Street,  
London, WC1N 1AL  
020 7405 4444  
bloomsburysales@frankharris.co.uk

Energy Rating: B. We aim to make our particulars both accurate and reliable. However they are not guaranteed; nor do they form part of an offer or contract. If you require clarification on any points then please contact us, especially if you're traveling some distance to view. Please note that appliances and heating systems have not been tested and therefore no warranties can be given as to their good working order.

