

Frank Harris & Co.



Bloomsbury, WC1H

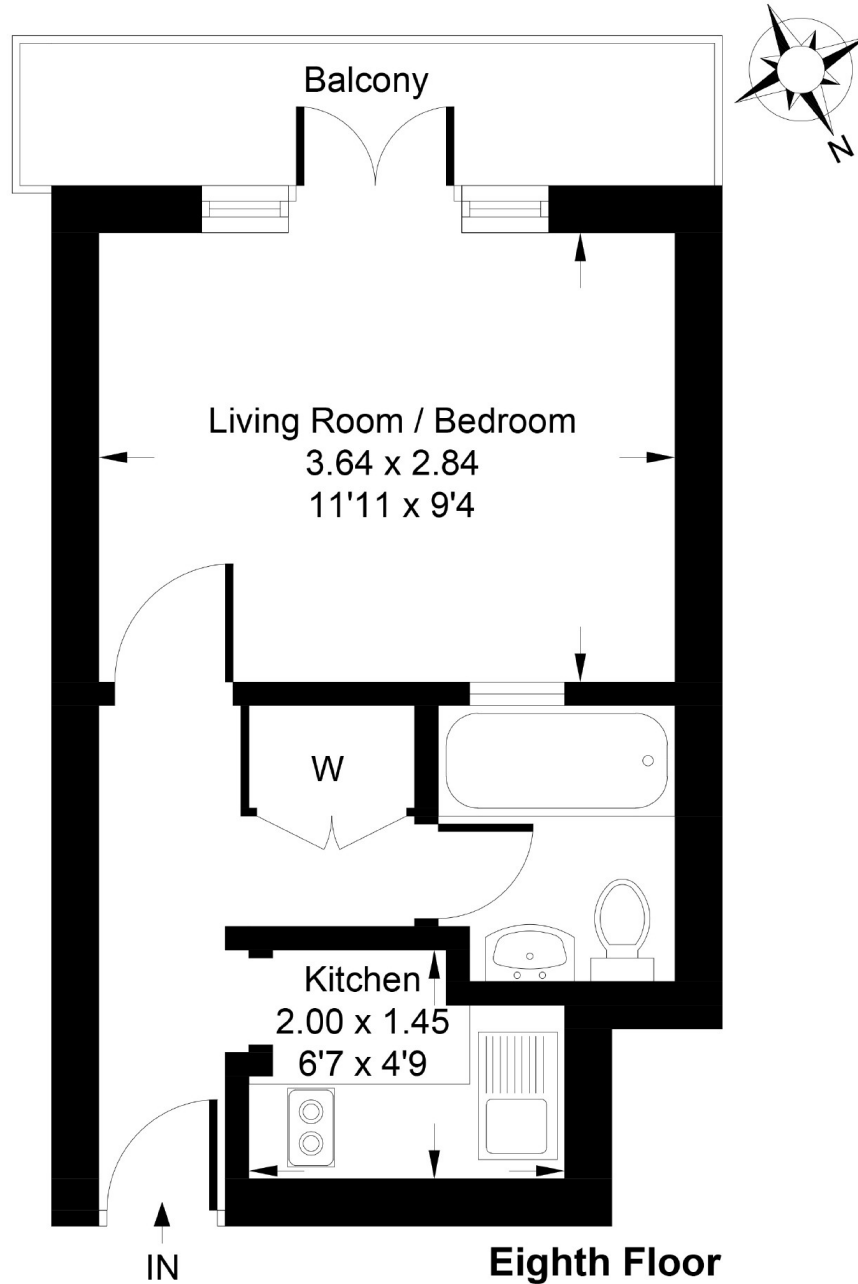
£305,000

A well-presented Studio apartment with a private balcony in Russell Court. The hallway is fitted with wardrobes and cupboards, The modern separate kitchen has an integrated Zanussi washing machine and Bosch dishwasher, Neff domino ceramic induction hob and worktop oven, fridge, granite work surfaces and glass splashback. The Studio room has an overhead fan and light and French windows to a private, west-facing, balcony with a view of Russell Square to the left.

Russell Court is located close to Russell Square Underground Station, UCL, SOAS, Euston, Kings Cross St Pancras and Eurostar terminal in walking distance. The Brunswick shopping centre is nearby, with shopping amenities, restaurants and a cinema.

Frank Harris & Co.

Approximate Gross Internal Area = 21.02 sq m / 226 sq ft



Whilst every attempt has been made to ensure the accuracy of the floor plan contained here, measurements of doors, windows, rooms and any other items are approximate and no responsibility is taken for any error, omission, or mis-statement. This plan is for illustrative purposes only and should be used as such by any prospective purchaser.

Frank Harris & Co. Bloomsbury and Kings Cross
81 Marchmont Street,
London, WC1N 1AL
020 7405 4444
bloomsburysales@frankharris.co.uk

Energy Rating: C. We aim to make our particulars both accurate and reliable. However they are not guaranteed; nor do they form part of an offer or contract. If you require clarification on any points then please contact us, especially if you're traveling some distance to view. Please note that appliances and heating systems have not been tested and therefore no warranties can be given as to their good working order.

