

Frank Harris & Co.



Bloomsbury, NW1

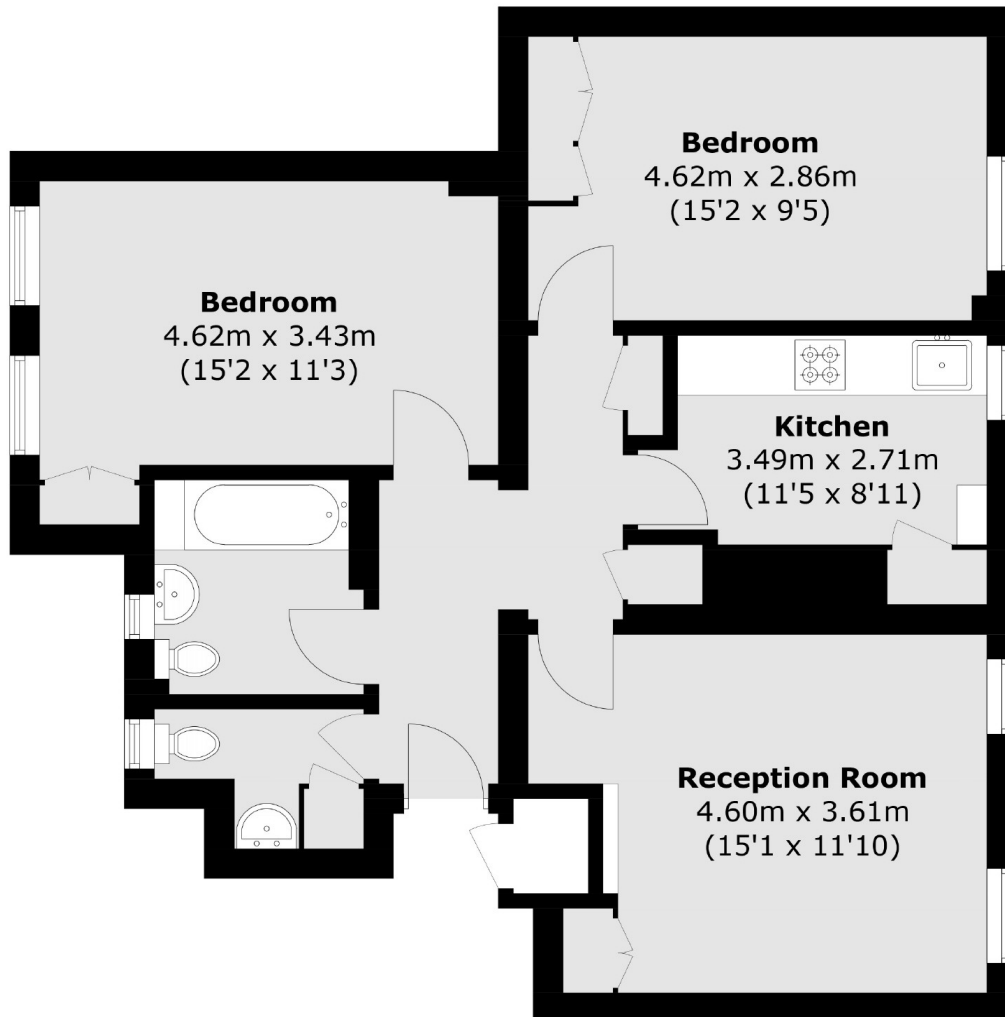
£600,000

Introducing this large two bedroom flat located on the second floor. Over 750 sq.ft this property has wooden flooring through out and is flooded with natural light. The apartment comprises of a two bedrooms, one reception room, one separate kitchen and one bathroom.

Churchway is a quiet street located moments away from Euston Station which provides excellent transport services (National Rail, Northern Line, Victoria Line). Set adjacent to the sought after Regent's Park the location is desirably situated with an array of London's West End entertainment on offer.

- Two Bedrooms • Low Rise Development • Low Service Charges •
- No Chain • Wooden Flooring • Centrally located •

Frank Harris & Co.



Total area (approx.): 70.5 sq. m (758.9 sq. ft)
External Storage (approx.): 0.7 sq. m (7.5 sq. ft)

Frank Harris & Co. Bloomsbury and Kings Cross
81 Marchmont Street,
London, WC1N 1AL
020 7405 4444
bloomsburysales@frankharris.co.uk

Energy Rating: C. We aim to make our particulars both accurate and reliable. However they are not guaranteed; nor do they form part of an offer or contract. If you require clarification on any points then please contact us, especially if you're traveling some distance to view. Please note that appliances and heating systems have not been tested and therefore no warranties can be given as to their good working order.