

Frank Harris & Co.



Bloomsbury, WC1E

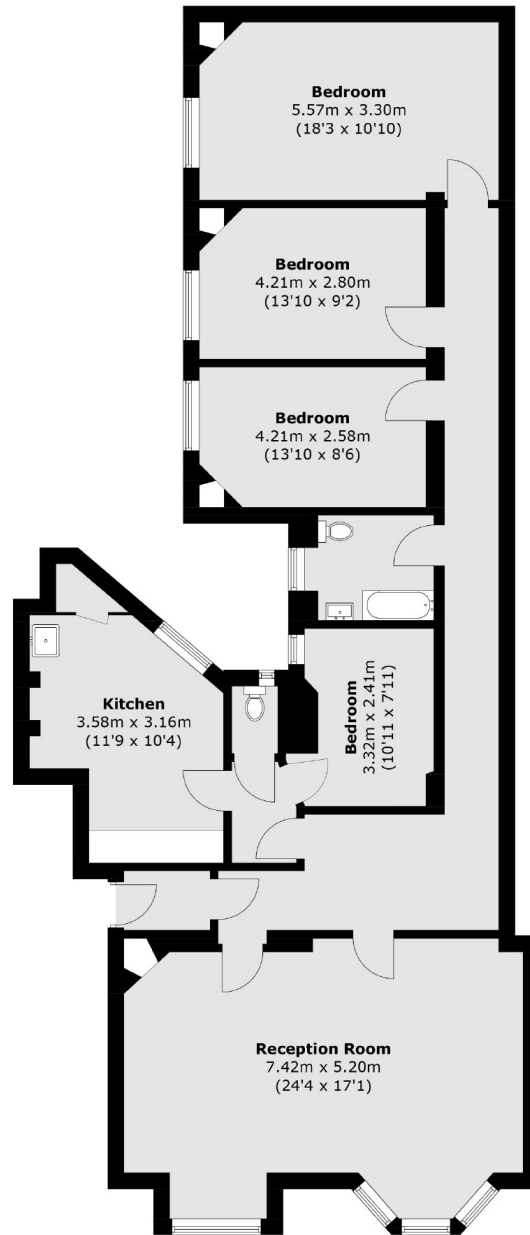
£1,250,000

Offered to the market is this four bedroom apartment situated on the raised ground floor in one of the areas finest mansion blocks located between Tottenham Court Road and Gower Street in the heart of Bloomsbury. The property comprises four double bedrooms, double reception room, main bathroom, separate WC and a large family kitchen. The property also benefits from having high ceilings and original features throughout.

Ideally located in the West End, Goodge Street underground station is the closest tube but Warren Street, Euston and Russell Square are all within a short walk from the property.

- Edwardian Mansion Block • High Ceilings • Four Double Bedrooms •

Frank Harris & Co.



Ground Floor

Total area (approx.): 137.8 sq. m (1,483.3 sq. ft)

Frank Harris & Co. Bloomsbury and Kings Cross
81 Marchmont Street,
London, WC1N 1AL
020 7405 4444
bloomsburysales@frankharris.co.uk

Energy Rating: D. We aim to make our particulars both accurate and reliable. However they are not guaranteed; nor do they form part of an offer or contract. If you require clarification on any points then please contact us, especially if you're traveling some distance to view. Please note that appliances and heating systems have not been tested and therefore no warranties can be given as to their good working order.