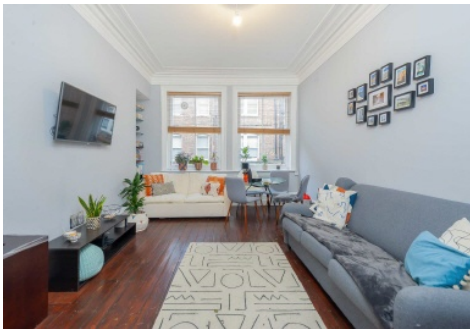


# Frank Harris & Co.



## Bedford Court Mansions, WC1B

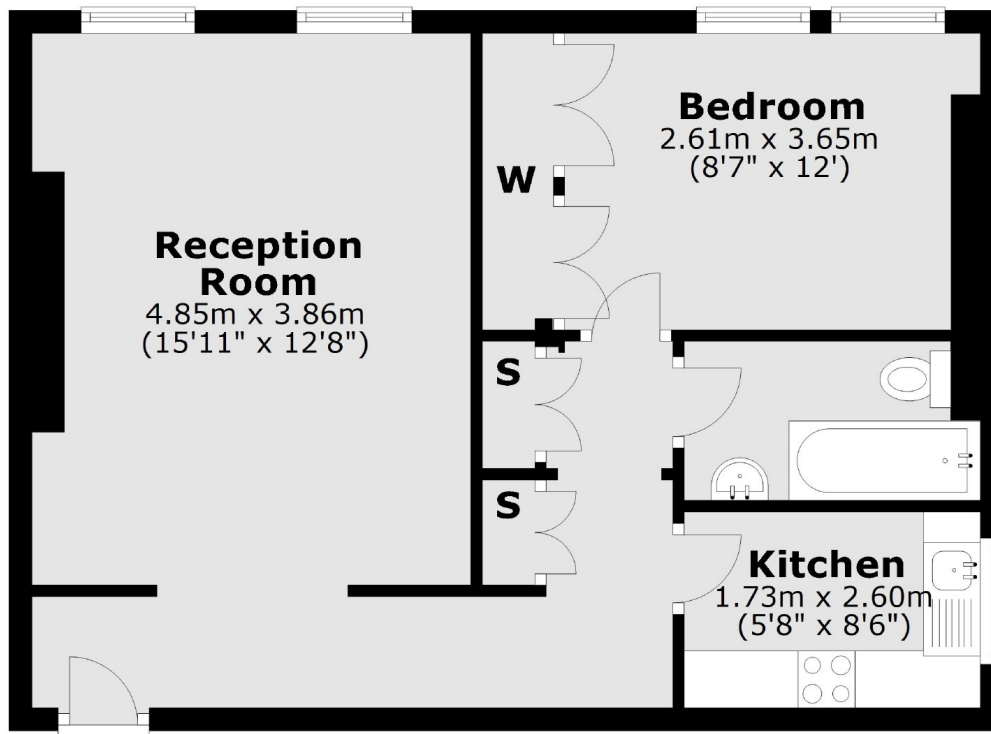
£730,000

A charming one bedroom with lots of natural light, situated on the fourth floor of this stunning mansion block in the centre of Bloomsbury. The apartment comprises of a large reception room with wooden flooring, separate kitchen and bright bedroom.

Both Tottenham Court Road and Goodge Street stations are within 5 minutes walk. Surrounded by an array of boutique shops and restaurants and also a short walk away from The British Museum.

- One Bedroom • Fourth Floor (with lift) • Sought After Location •
- Period Mansions Block • Concierge • Wooden Flooring Throughout •

# Frank Harris & Co.



## Fourth Floor

Total area: approx. 49.5 sq. metres (532.4 sq. feet)

Frank Harris & Co. Bloomsbury and Kings Cross  
81 Marchmont Street,  
London, WC1N 1AL  
020 7405 4444  
bloomsburysales@frankharris.co.uk

Energy Rating: E. We aim to make our particulars both accurate and reliable. However they are not guaranteed; nor do they form part of an offer or contract. If you require clarification on any points then please contact us, especially if you're traveling some distance to view. Please note that appliances and heating systems have not been tested and therefore no warranties can be given as to their good working order.