

Frank Harris & Co.



Brunswick Centre, WC1N

£725,000

Positioned on the sixth floor (with lift) of this purpose built block, this property has two double bedrooms, a semi-open-plan kitchen reception room and private balcony with London skyline views.

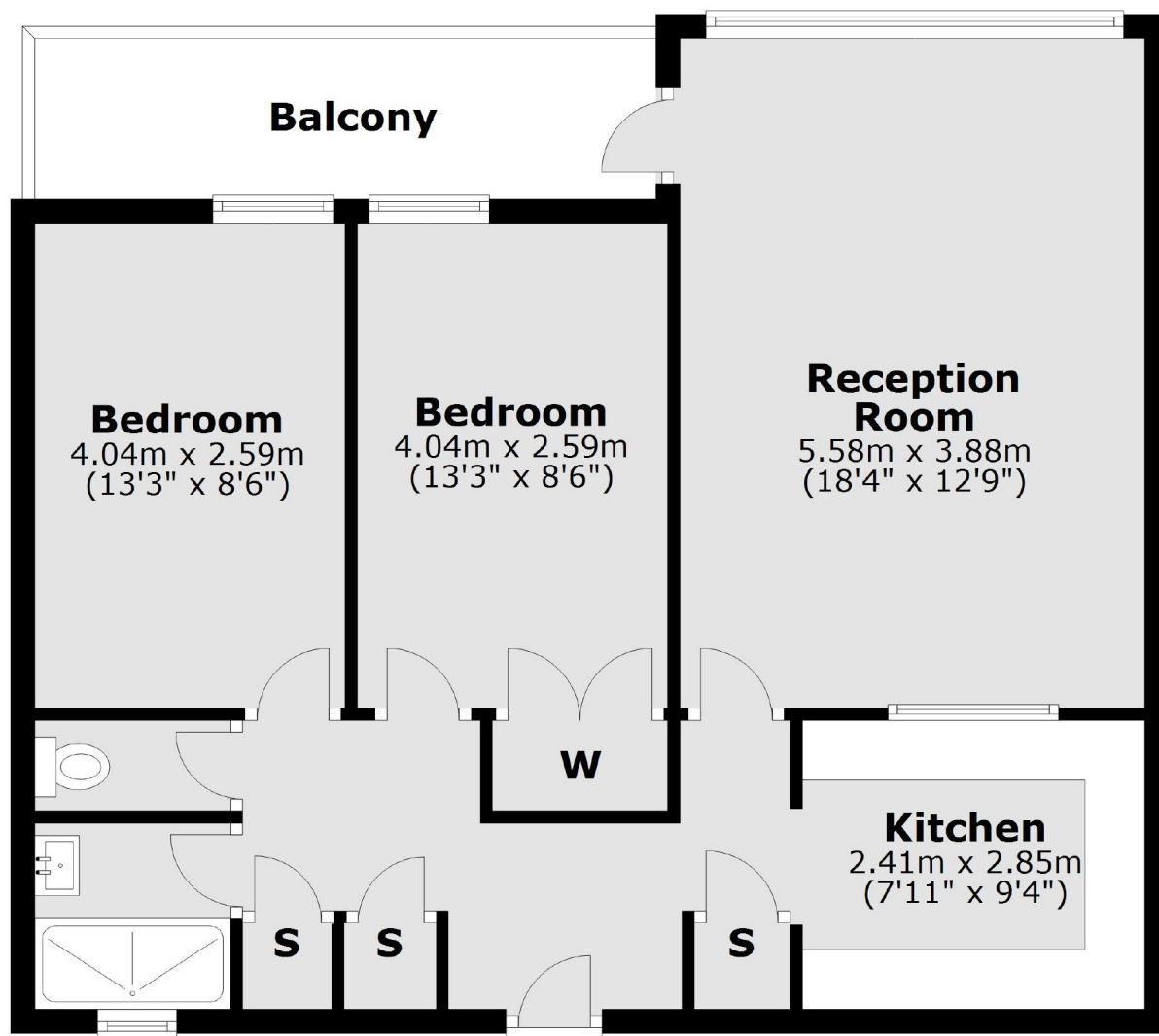
Russell Square tube station is nearby as well as Kings Cross St Pancras International and Euston stations.

- 2 Double bedrooms • Heating and Hot Water Included • Sixth Floor •
- Balcony • Local Amenities • West Facing •

Frank Harris

— & Co. —

Sixth Floor



Total area: approx. 66.6 sq. metres (717.2 sq. feet)

Frank Harris & Co. Bloomsbury and Kings Cross
81 Marchmont Street,
London, WC1N 1AL
020 7405 4444
info@frankharris.co.uk

Energy Rating: C. We aim to make our particulars both accurate and reliable. However they are not guaranteed; nor do they form part of an offer or contract. If you require clarification on any points then please contact us, especially if you're traveling some distance to view. Please note that appliances and heating systems have not been tested and therefore no warranties can be given as to their good working order.