

Frank Harris & Co.



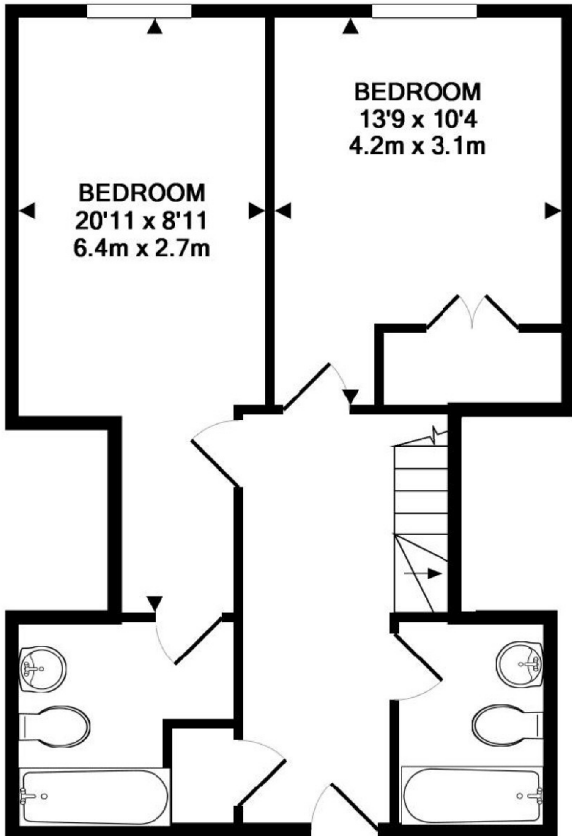
Waterloo, SE1

£692 Per week

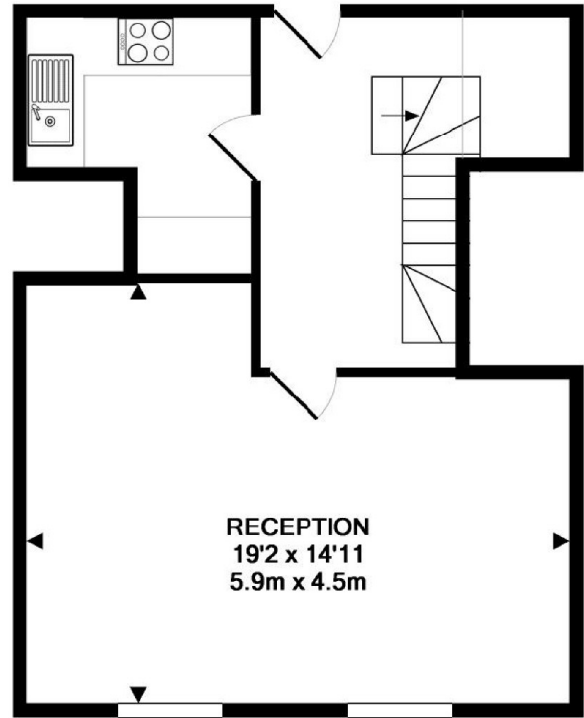
Furnished split level duplex apartment on the 8th & 9th (top) floors of the prestigious County Hall. The apartment has two bedrooms, two bathrooms, fully equipped kitchen and good size living room with angled river views. Benefits include on-site gym, swimming pool and 24hr concierge.

- Two Double Bedrooms • Two Bathrooms • Split Level •
- Gym & Pool • Courtyard Facing • Parking By Separate Negotiation •

Frank Harris & Co.



8TH FLOOR
APPROX. FLOOR
AREA 487 SQ.FT.
(45.2 SQ.M.)



9TH FLOOR
APPROX. FLOOR
AREA 422 SQ.FT.
(39.2 SQ.M.)

TOTAL APPROX. FLOOR AREA 908 SQ.FT. (84.4 SQ.M.)

Whilst every attempt has been made to ensure the accuracy of the floor plan contained here, measurements of doors, windows, rooms and any other items are approximate and no responsibility is taken for any error, omission, or mis-statement. This plan is for illustrative purposes only and should be used as such by any prospective purchaser. The services, systems and appliances shown have not been tested and no guarantee as to their operability or efficiency can be given

Made with Metropix ©2014

Frank Harris & Co. South Bank and Waterloo
123 Stamford Street, London,
SE1 9NN
020 7590 7100
southbanklettings@frankharris.co.uk

Energy Rating: . We aim to make our particulars both accurate and reliable. However they are not guaranteed; nor do they form part of an offer or contract. If you require clarification on any points then please contact us, especially if you're traveling some distance to view. Please note that appliances and heating systems have not been tested and therefore no warranties can be given as to their good working order.

