

# Frank Harris & Co.



## Charles Clowes Walk, SW11

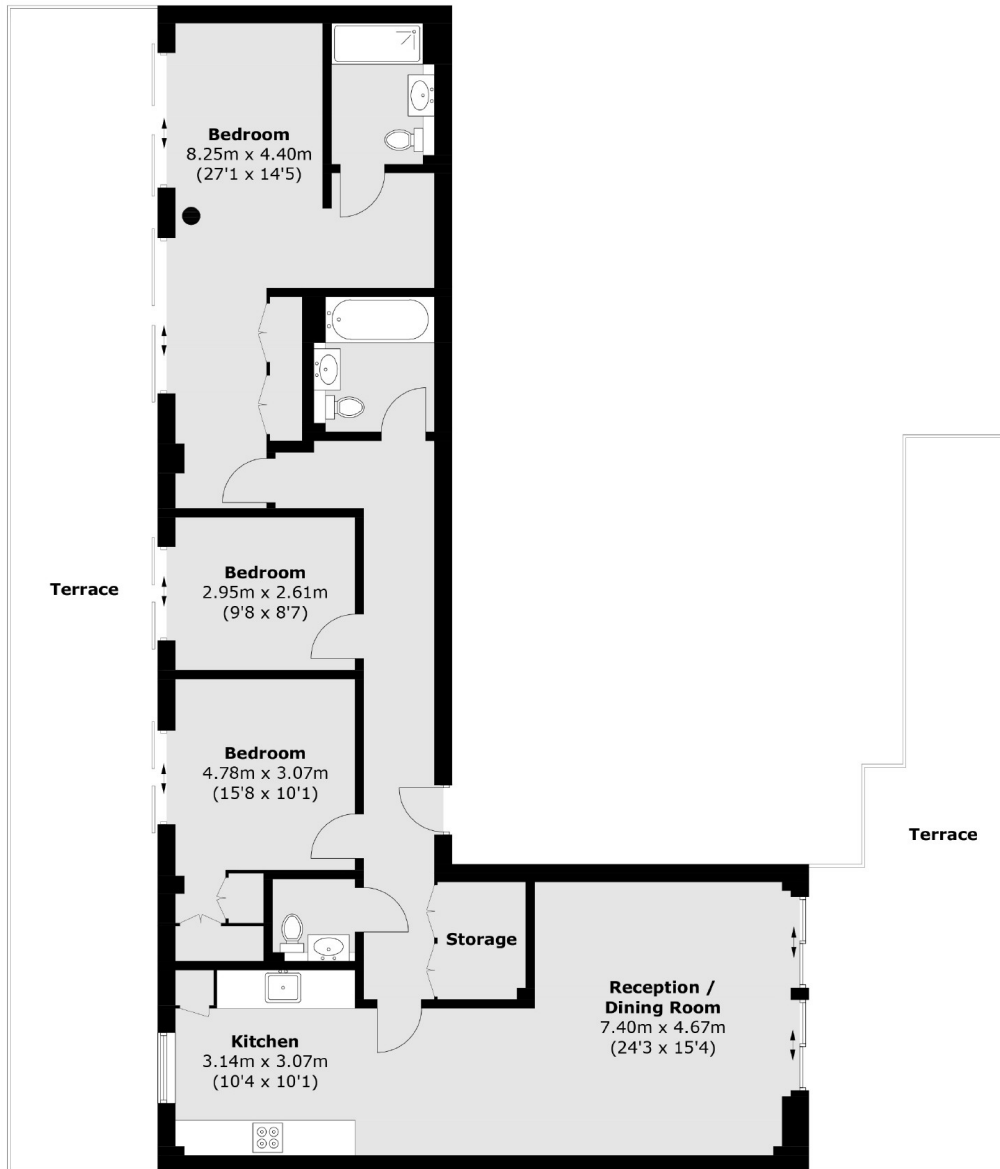
£1,800 pcm

This stunning three bedroom, two bathroom penthouse is located in the highly desirable Nine Elms. The property comprises of a spacious open plan living area, wooden flooring throughout and a private balcony. Tenants will also have access to an on-site gym, board room and twenty-four hour concierge.

With the new Nine Elms Station, Oval Station and Oval Cricket ground a short distance away, Vauxhall mainline and underground stations (Victoria Line) are on your doorstep with numerous bus routes and the Thames riverboat services nearby.

- Three Bedrooms • Two Bathrooms • Gym •
- 24 Hour Concierge • Balcony • Penthouse •

# Frank Harris & Co.



## Tenth Floor

Total area (approx.): 114.6 sq. m (1,233.5 sq. ft)  
Terrace (approx.): 80.8 sq. m (869.7 sq. ft)

Frank Harris & Co. South Bank and Waterloo  
123 Stamford Street, London,  
SE1 9NN  
020 7590 7100  
[southbanklettings@frankharris.co.uk](mailto:southbanklettings@frankharris.co.uk)

Energy Rating: B. We aim to make our particulars both accurate and reliable. However they are not guaranteed; nor do they form part of an offer or contract. If you require clarification on any points then please contact us, especially if you're traveling some distance to view. Please note that appliances and heating systems have not been tested and therefore no warranties can be given as to their good working order.

