

# Frank Harris

— & Co. —



## Sullivan Road, SE11

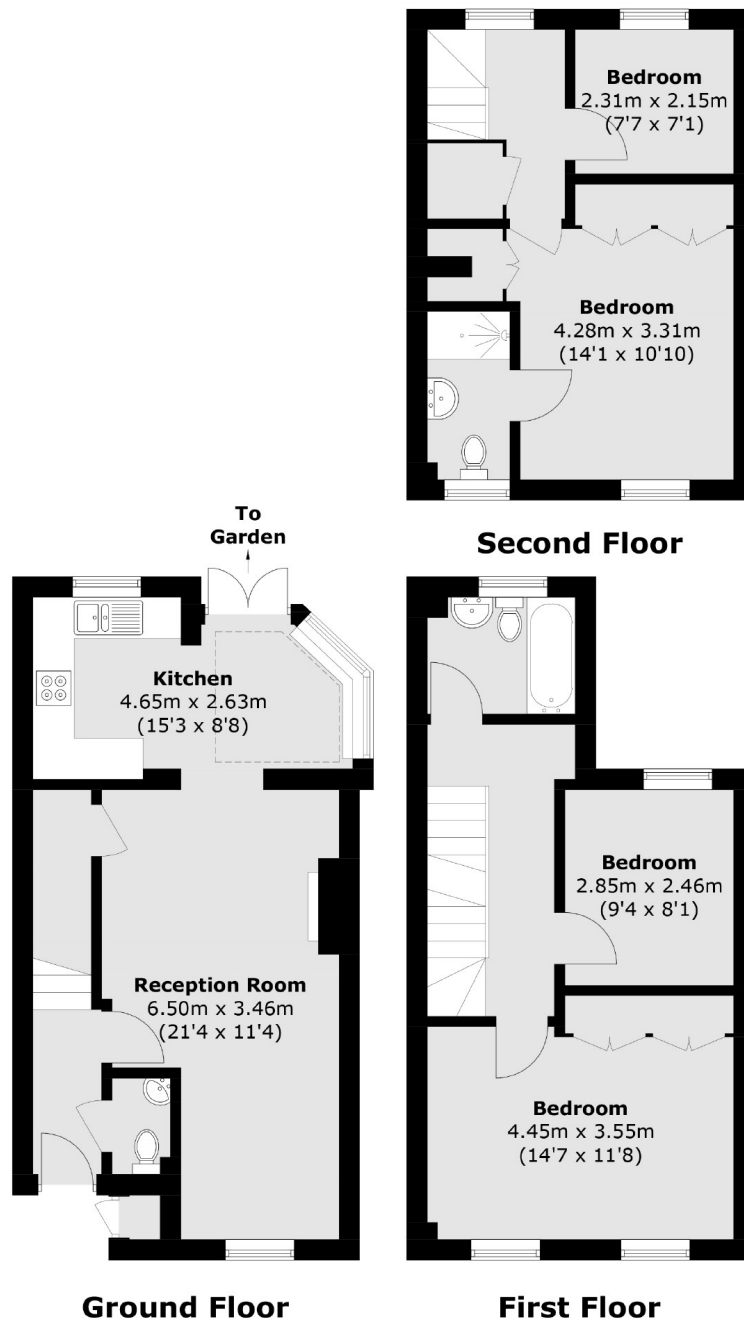
£900 pcm

A beautiful three bedroom, two bathroom house presented in good condition and with well-proportioned rooms. The house comprises a large open plan kitchen/reception room with a private garden.

Close to Waterloo Station, Southwark tube and the many eclectic shops, bars, restaurants and theatres along The Cut together with many leisure facilities that the South Bank offers including, the Tate Modern, Royal Festival Hall and Borough Market towards London Bridge.

- Three Bedrooms • Two Bathrooms • Study •
- Furnished • Private Garden • House •

# Frank Harris & Co.



Total area (approx.): 103.3 sq. m (1,111.9 sq. ft)  
External Cupboard (approx.): 0.4 sq. m (4.3 sq. ft)

Frank Harris & Co. South Bank and Waterloo  
123 Stamford Street, London,  
SE1 9NN  
020 7590 7100  
[southbanklettings@frankharris.co.uk](mailto:southbanklettings@frankharris.co.uk)

Energy Rating: C. We aim to make our particulars both accurate and reliable. However they are not guaranteed; nor do they form part of an offer or contract. If you require clarification on any points then please contact us, especially if you're traveling some distance to view. Please note that appliances and heating systems have not been tested and therefore no warranties can be given as to their good working order.

