

Frank Harris — & Co. —



Gabriel House, Old Paradise Street, SE11

£500,000

A very attractive two double bedroom top floor apartment close to Lambeth Bridge and the River Thames. With a south-westerly view of the Old Paradise Gardens, this apartment is bathed in light in all rooms and is a convenient walk from many of London's biggest attractions, such as the Palace of Westminster, Big Ben, the Tate Britain and the London Eye.



The apartment has been completely refurbished to a high standard to include new decor, new wood flooring throughout, new doors, new double glazed windows, a new bathroom and modern kitchen.

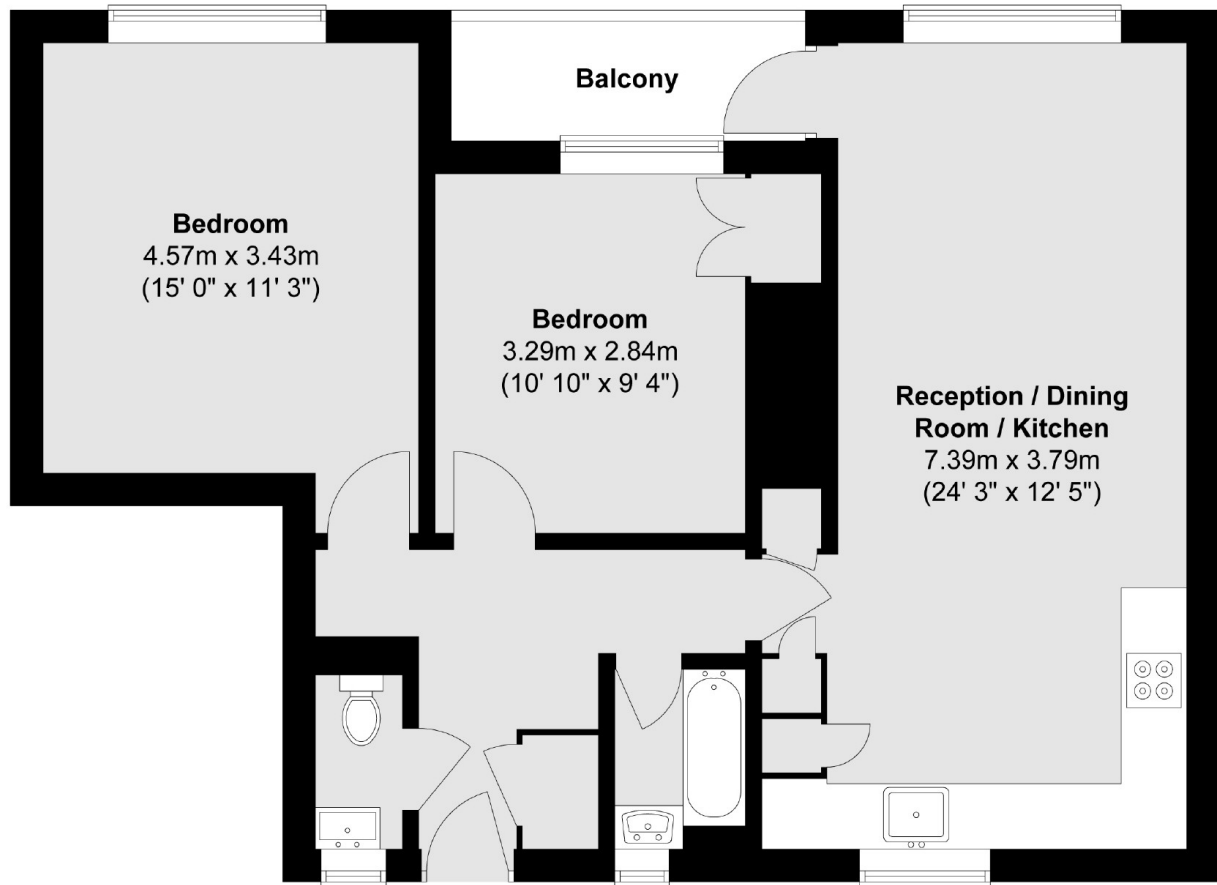
The flat comprises an entrance hall, two double size bedrooms with fitted wardrobes, a fully equipped kitchen, a large south-facing open-plan living room with good size balcony, a full bathroom with shower above bath, cloakroom with additional WC and hand-wash basin.

This apartment is a short walk from Lambeth North tube station and the Bakerloo Line, and a 15 minute walk from Waterloo Station with access to the Jubilee Line, Northern Line, and Waterloo & City Line.

- Chain Free • Top Floor • Two Double Bedrooms •
 - Private Balcony • Convenient Location •
-



Frank Harris & Co.



Total area (approx.) : 64.8 sq. m (697 sq. ft)
Total balcony area (approx.) : 4 sq. m (43 sq. ft)

Frank Harris & Co. South Bank and Waterloo
123 Stamford Street, London,
SE1 9NN
020 7620 3400
southbanksales@frankharris.co.uk

Energy Rating: D. We aim to make our particulars both accurate and reliable. However they are not guaranteed; nor do they form part of an offer or contract. If you require clarification on any points then please contact us, especially if you're traveling some distance to view. Please note that appliances and heating systems have not been tested and therefore no warranties can be given as to their good working order.

