

# Frank Harris & Co.



## Belvedere Road, SE1

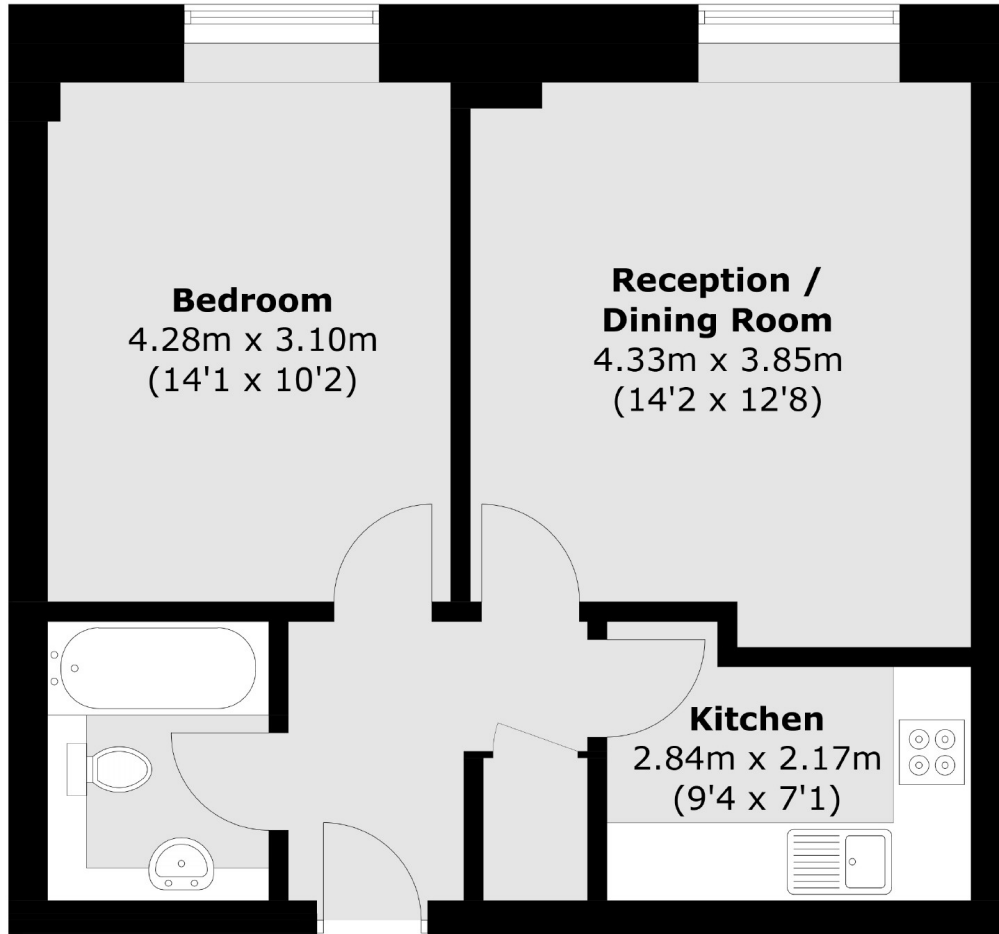
£553 pcm

A fully furnished one bedroom apartment on the third floor of the sought after County Hall development by The London Eye. The apartment has been attractively furnished, and has wood flooring to the living room, and secondary double glazing. The bathroom has bath and shower facilities, and the kitchen is fully equipped.

On-site facilities include a large well equipped gym/fitness centre, swimming pool, sauna, steam room and 24hr concierge. Waterloo Station is within a couple of minutes walk.

- 24 Hour Concierge • Swimming Pool • Gym •
- Furnished • Communal Gardens • Close to Waterloo Station •

# Frank Harris & Co.



Total area (approx.): 45.8 sq. m (492.9 sq. ft)

Frank Harris & Co. South Bank and Waterloo  
123 Stamford Street, London,  
SE1 9NN  
020 7590 7100  
[southbanklettings@frankharris.co.uk](mailto:southbanklettings@frankharris.co.uk)

Energy Rating: B. We aim to make our particulars both accurate and reliable. However they are not guaranteed; nor do they form part of an offer or contract. If you require clarification on any points then please contact us, especially if you're traveling some distance to view. Please note that appliances and heating systems have not been tested and therefore no warranties can be given as to their good working order.

