

Frank Harris & Co.



, W8

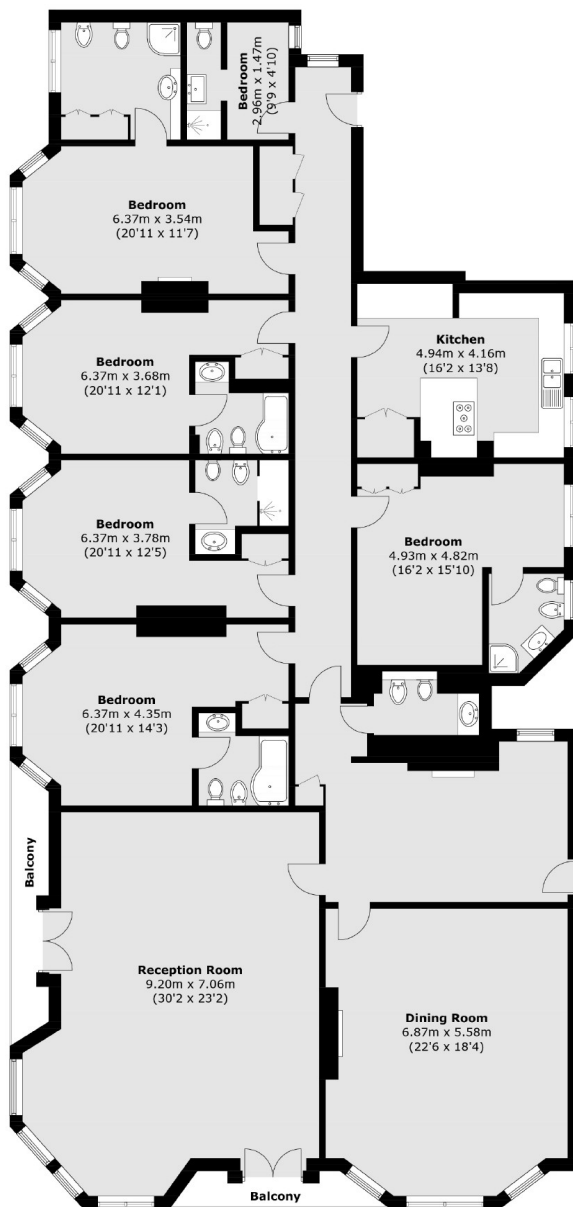
£5,000 pcm

Incredible six bedroom flat located in the highly desirable Cumberland House. The property consists of six bedrooms, six bathrooms, guest WC, separate kitchen as well as separate dining room and reception room.

Cumberland House is located right near Kensington Gardens, Hyde Park and along Kensington High Street. There are many shops, several amenities and with fantastic transport links.

- Six Bedrooms • Six Bathrooms • Secure Development •
- Concierge • Furnished • Second Floor •

Frank Harris & Co.



Total area (approx.): 309.0 sq. m (3,326.1 sq. ft)
Balcony: 7.7 sq. m (82.9 sq. ft)

Frank Harris & Co. South Bank and Waterloo
123 Stamford Street, London,
SE1 9NN
020 7590 7100
southbanklettings@frankharris.co.uk

Energy Rating: C. We aim to make our particulars both accurate and reliable. However they are not guaranteed; nor do they form part of an offer or contract. If you require clarification on any points then please contact us, especially if you're traveling some distance to view. Please note that appliances and heating systems have not been tested and therefore no warranties can be given as to their good working order.

