

Frank Harris & Co.



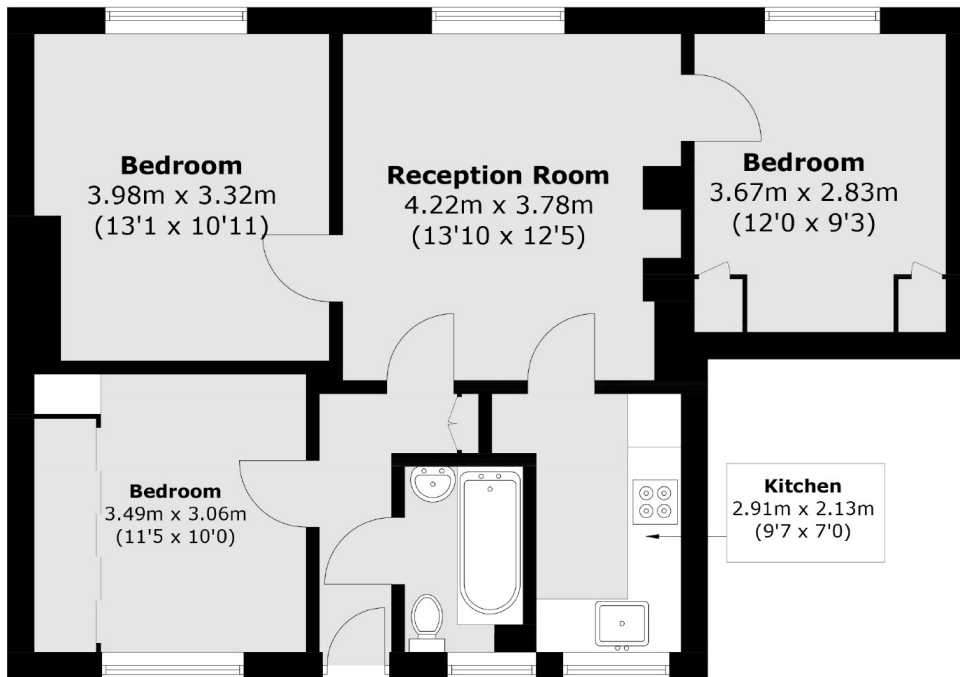
Climsland House, SE1

£600,000

A spacious and well-proportioned three double bedroom apartment set on the second floor of this popular purpose built block. Presented in good order and located on a quiet street the property benefits from lots of natural light and is offered on a chain free basis

Located moments from the South Bank and a short walk to both Waterloo and Southwark underground stations. Local shops, cafés and restaurants can be found on Lower Marsh and The Cut, home to the Old Vic Theatre. Covent Garden and Trafalgar Square are within easy walking distance. Whilst nearby attractions include the Tate Modern, the National Theatre, the Hayward Gallery, the Globe Theatre and Borough Market.

Frank Harris & Co.



Total area (approx.): 60.7 sq. m (654.2 sq. ft)
(Excluding Eaves)

Frank Harris & Co. South Bank and Waterloo
123 Stamford Street,
London, SE1 9NN
020 7620 3400
southbanksales@frankharris.co.uk

Energy Rating: . We aim to make our particulars both accurate and reliable. However they are not guaranteed; nor do they form part of an offer or contract. If you require clarification on any points then please contact us, especially if you're traveling some distance to view. Please note that appliances and heating systems have not been tested and therefore no warranties can be given as to their good working order.

