

Frank Harris & Co.



Stockwell, SW9

£380 Per week

Charming one bedroom maisonette with a good size private balcony. Well located for access to three tube stations and major bus routes. (Stockwell, Oval and Loughborough Junction Station.)

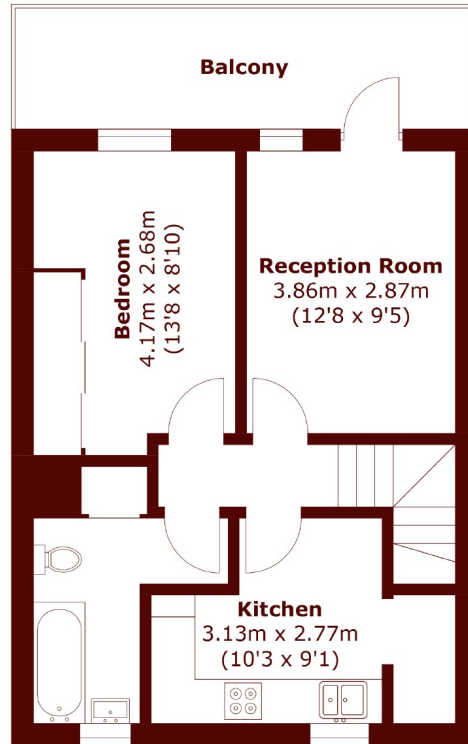
A charming one bedroom purpose built maisonette on first and second floors. Conveniently located between Brixton, Stockwell and Oval underground stations and a couple of minutes walk from a number of bus routes on Brixton



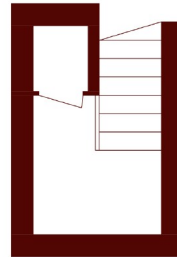
- One Bedroom • Private Balcony • Furnished •
- Parking Available • Second Floor • Stockwell •



Frank Harris & Co.



Second Floor



First Floor

Total area (approx.): 49.9 sq. m (537.1 sq. ft)
Balcony: 10.3 sq. m (110.9 sq. ft)

Frank Harris & Co. South Bank and Waterloo
123 Stamford Street, London,
SE1 9NN
020 7590 7100
southbanklettings@frankharris.co.uk

Energy Rating: B. We aim to make our particulars both accurate and reliable. However they are not guaranteed; nor do they form part of an offer or contract. If you require clarification on any points then please contact us, especially if you're traveling some distance to view. Please note that appliances and heating systems have not been tested and therefore no warranties can be given as to their good working order.

