

Frank Harris & Co.



City of London, EC1A

£750 Per week

A lovely two bedroom split-level apartment with a versatile layout and a contemporary interior, situated within a unique building located in this historic quarter of the City of London.

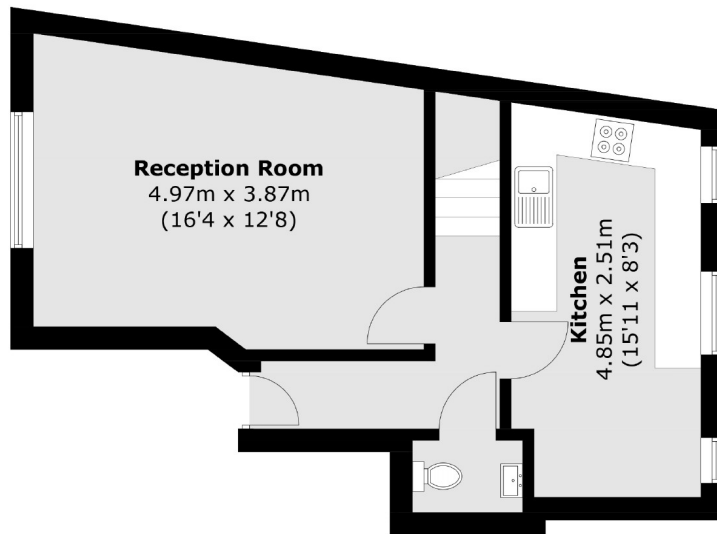


Located on a small cobbled square, next door to the ancient church of St. Bartholomew the Great, the flat is close to all the local amenities as well as the various transport connections at Barbican, St. Paul's, City Thameslink and Farringdon stations.

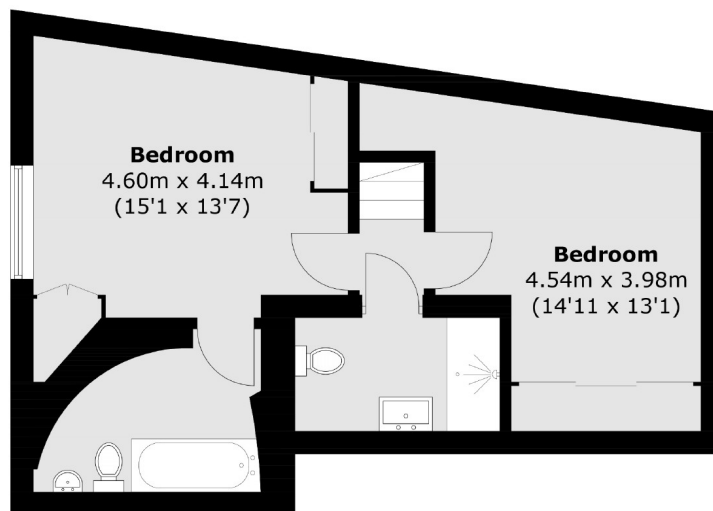
- Two Bedrooms • Two Bathrooms • High Ceilings •
- Contemporary Interior • Quiet City Location • Furnished •



Frank Harris & Co.



Ground Floor



Lower Ground Floor

Total area (approx.): 82.9 sq. m (892.3 sq. ft)

Frank Harris & Co. Barbican and City
87 Long Lane, London, EC1A
9ET
020 7601 1919
citylettings@frankharris.co.uk

Energy Rating: C. We aim to make our particulars both accurate and reliable. However they are not guaranteed; nor do they form part of an offer or contract. If you require clarification on any points then please contact us, especially if you're traveling some distance to view. Please note that appliances and heating systems have not been tested and therefore no warranties can be given as to their good working order.

