

Frank Harris & Co.



Aldgate, E1

£877 Per week

A three double bedroom apartment with two bathrooms, an open plan kitchen and living area plus a balcony. Situated in a modern development, the flat is offered furnished.

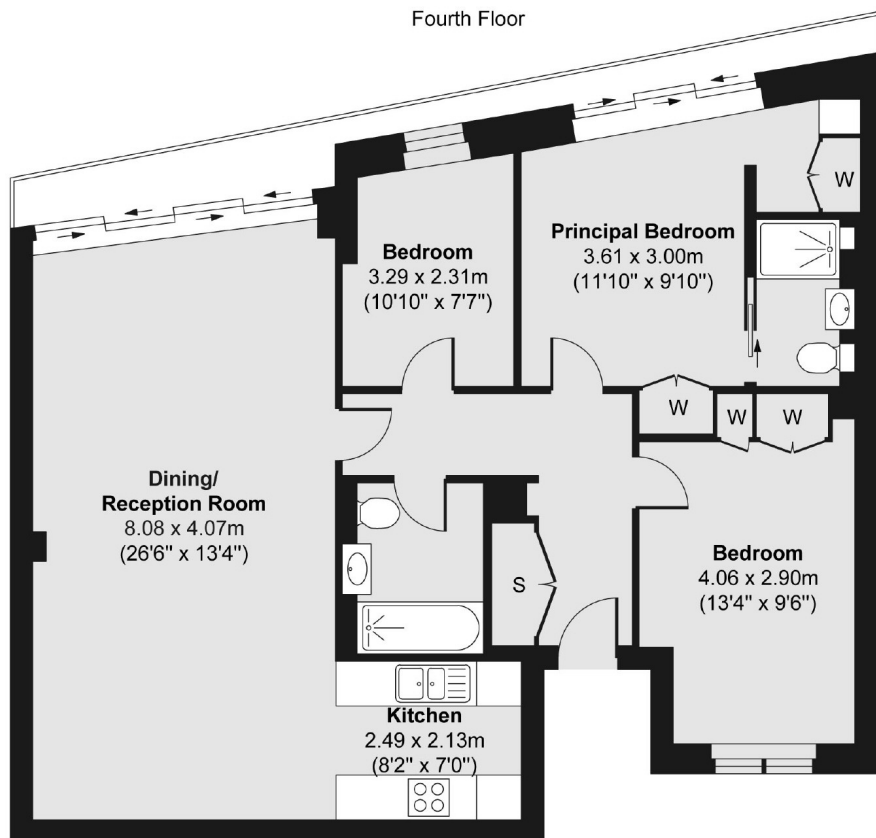


The Spaceworks Building is located on the eastern fringe of the City, between Whitechapel and Commercial Road. Nearest transport links are at Aldgate, Aldgate East and Whitechapel stations.

- Three Bedrooms • Two Bathrooms • Modern Interior •
- Wood Floors • Balcony • Furnished •



Frank Harris & Co.



Total area (approx.) 90.24 sq. m (971 sq. ft)
Total Balcony area (approx.) 6.36 sq. m (68 sq. ft)

Frank Harris & Co. Barbican and City
87 Long Lane, London, EC1A
9ET
020 7601 1919
citylettings@frankharris.co.uk

Energy Rating: C. We aim to make our particulars both accurate and reliable. However they are not guaranteed; nor do they form part of an offer or contract. If you require clarification on any points then please contact us, especially if you're traveling some distance to view. Please note that appliances and heating systems have not been tested and therefore no warranties can be given as to their good working order.

