

Frank Harris & Co.



Andrewes House, EC2Y

£700,000

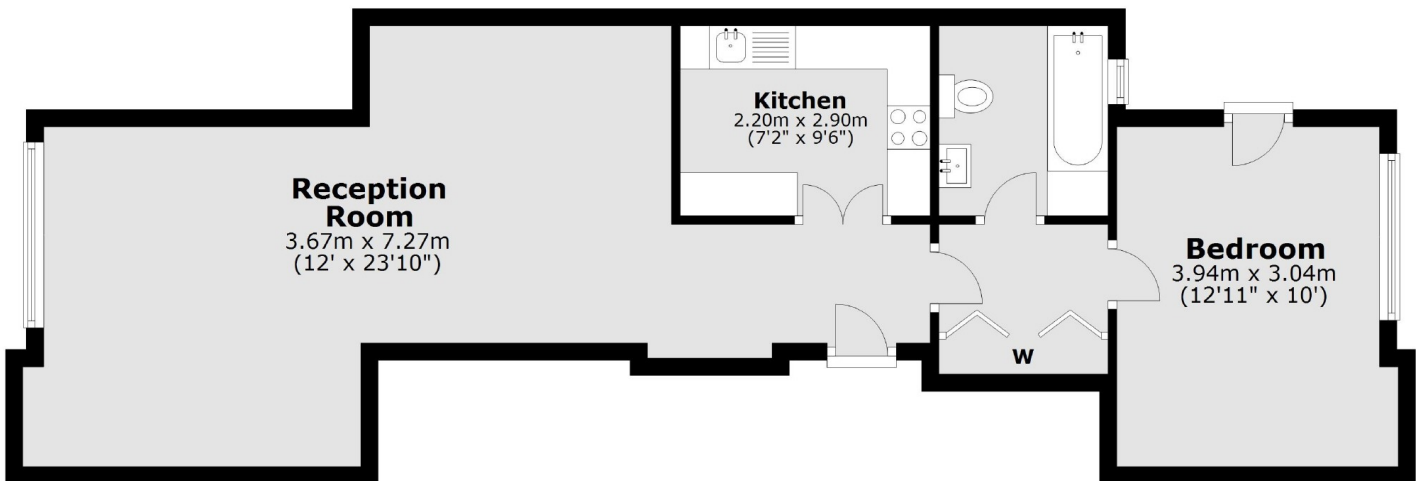
This one bedroom apartment overlooks the Barbican lake from the reception room and a private garden from the bedroom. There is a shaker style kitchen and an updated bathroom.

Andrewes House is 250 metres from Moorgate station and soon to arrive Crossrail Ticket Hall.

- Type 16 • Shaker Style Kitchen • Lakeside View •
- Dining Area • Modernised Bathroom • No Onward Chain •

Frank Harris & Co.

Below Podium



Total area: approx. 59.8 sq. metres (644.0 sq. feet)

Frank Harris & Co. Barbican and City
87 Long Lane, London,
EC1A 9ET
020 7600 7000
city@frankharris.co.uk

Energy Rating: TBC. We aim to make our particulars both accurate and reliable. However they are not guaranteed; nor do they form part of an offer or contract. If you require clarification on any points then please contact us, especially if you're traveling some distance to view. Please note that appliances and heating systems have not been tested and therefore no warranties can be given as to their good working order.