

Frank Harris & Co.



West Smithfield, City of London, EC1A

£630,000

With a contemporary interior, this two bedroom apartment is within an impressive Victorian former bank building. Set at the back of the building the apartment has two double bedrooms, a shower room, en-suite bathroom and a contemporary open plan kitchen to the reception room. The apartment benefits from a long lease.



West Smithfield is a short walk away from the bars and restaurants of Clerkenwell including Club Gascon & Smiths of Smithfield.

The Museum of London will open in 2026, expecting to attract over one million visitors annually, the 900 year old Smithfield meat market will be also relocating from 2028.

St Bartholomew the Great, London's oldest surviving church is also just a short walk away.

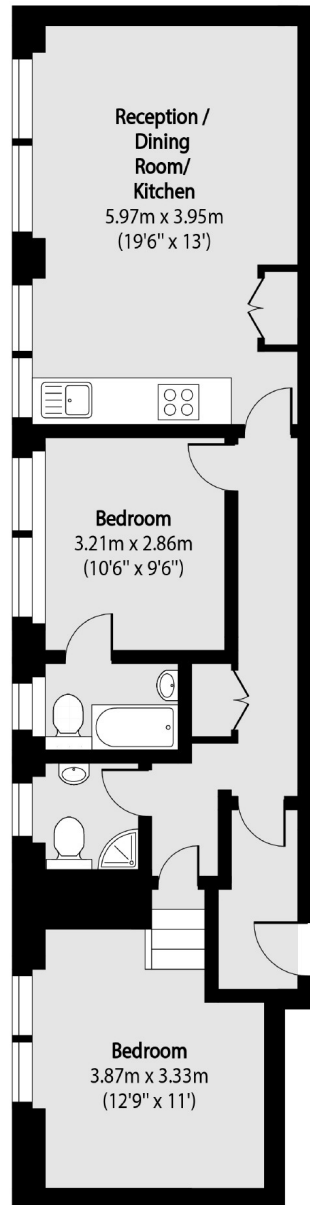
One New Change shopping centre is close by at St.Pauls, and there is a full size Waitrose supermarket on Whitecross Street alongside a Marks and Spencer Food and clothing store in Moorgate.

The location benefits from superb transport links, with Barbican, Farringdon and St Pauls stations all close by with access to the Elizabeth Line, Circle, Hammersmith and City, Metropolitan Line and Thameslink.

- Two Bedroom Apartment • First Floor • Period Building •
 - Long Lease • Low Service Charges • No Onward Chain •
-



Frank Harris & Co.



Total area (approx): 68.18 sq m (734 sq. ft)

Frank Harris & Co. Barbican and City
87 Long Lane, London,
EC1A 9ET
020 7600 7000
citysales@frankharris.co.uk

Energy Rating: E. We aim to make our particulars both accurate and reliable. However they are not guaranteed; nor do they form part of an offer or contract. If you require clarification on any points then please contact us, especially if you're traveling some distance to view. Please note that appliances and heating systems have not been tested and therefore no warranties can be given as to their good working order.

