

Frank Harris & Co.



The City of London, EC1A

£1,200 Per week

A four double bedroom apartment arranged over two levels with two bathrooms and an additional w/c. The interior is modern while retaining some of the original features as well as having high ceilings. Available immediately.

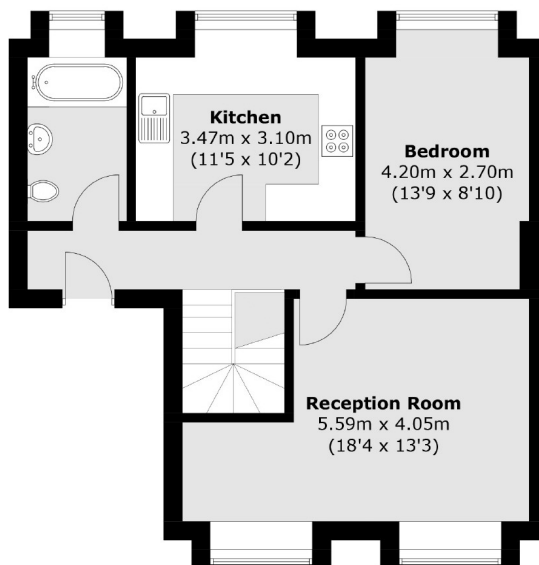


Situated on Middle Street, one of the narrow streets in this historic City location between Smithfield Market and the Barbican. This is about half way between Farringdon and Barbican stations, (both about 0.1 miles away) with St Paul's and City Thameslink stations also nearby.

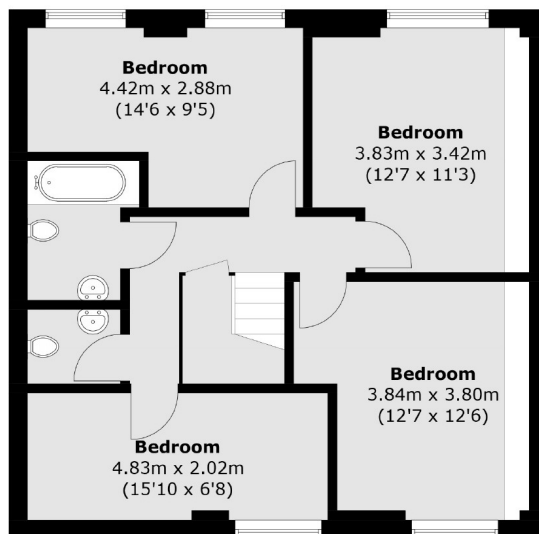
- Four Bedrooms • Two Bathrooms • Two Receptions •
- Warehouse Conversion • Furnished • Available Now •



Frank Harris & Co.



Ground Floor



Lower Ground Floor

Total area (approx.): 119.3 sq. m (1,284.1 sq. ft)

Frank Harris & Co. Barbican and City
87 Long Lane, London,
EC1A 9ET
020 7601 1919
citylettings@frankharris.co.uk

Energy Rating: C. We aim to make our particulars both accurate and reliable. However they are not guaranteed; nor do they form part of an offer or contract. If you require clarification on any points then please contact us, especially if you're traveling some distance to view. Please note that appliances and heating systems have not been tested and therefore no warranties can be given as to their good working order.

