

Frank Harris — & Co. —



Crawford Building, Aldgate East, E1

£490,000

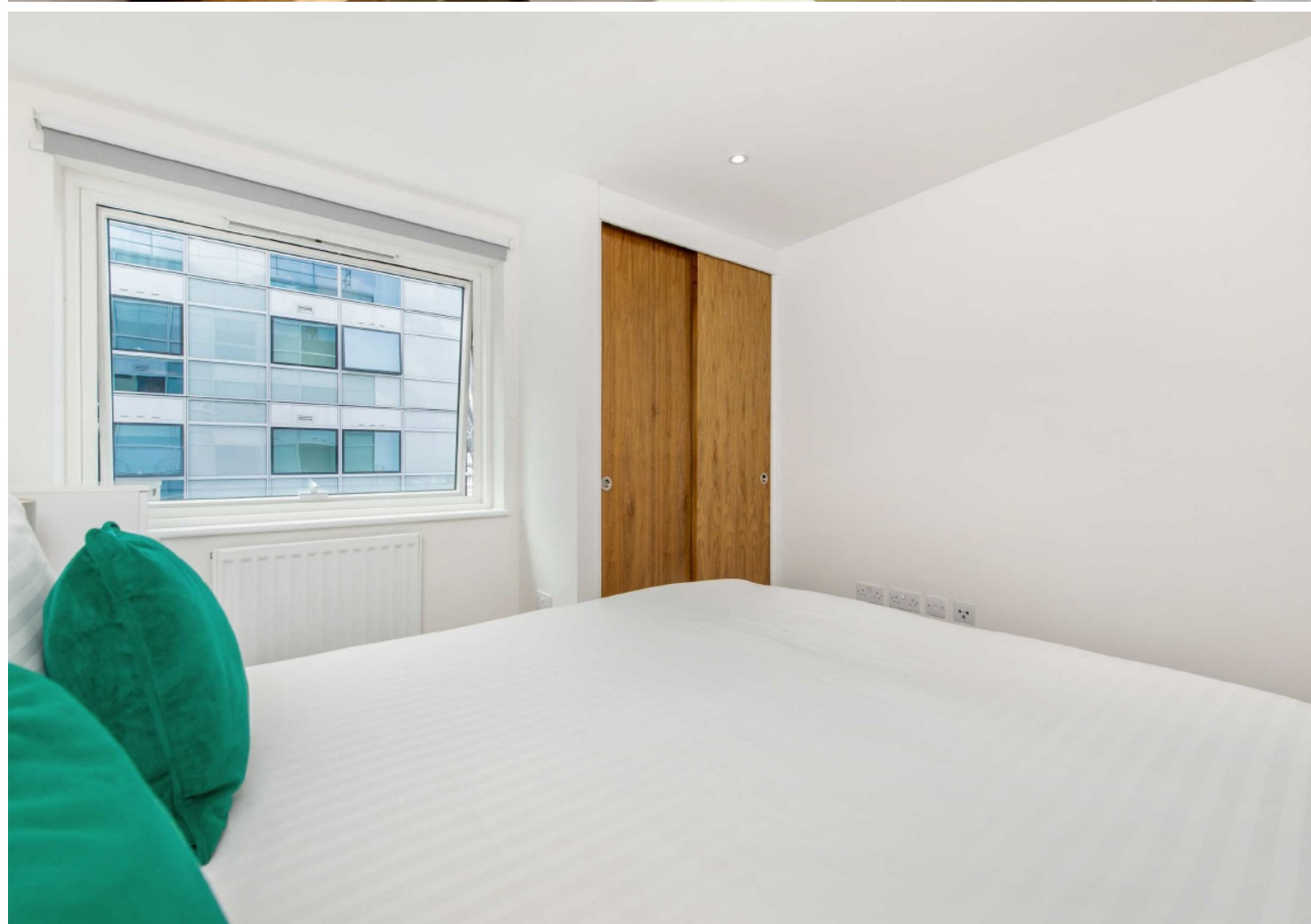
A bright, 19th floor, one bedroom apartment within Redrow's Crawford Building, ideally located for transport links and amenities in the City. This apartment includes an open plan living and dining area, fitted kitchen with integrated appliances, wood flooring, floor-to-ceiling windows, and a bedroom with fitted storage.



Residents have access to a 24-hour concierge service. There are several amenities located nearby including bars, shops, restaurants, cafés, and cultural attractions including the Whitechapel Gallery. The development is located on top of Aldgate East Underground station and only 0.2 miles from Aldgate Station, providing a valuable transport link for commutes to key destinations across London.

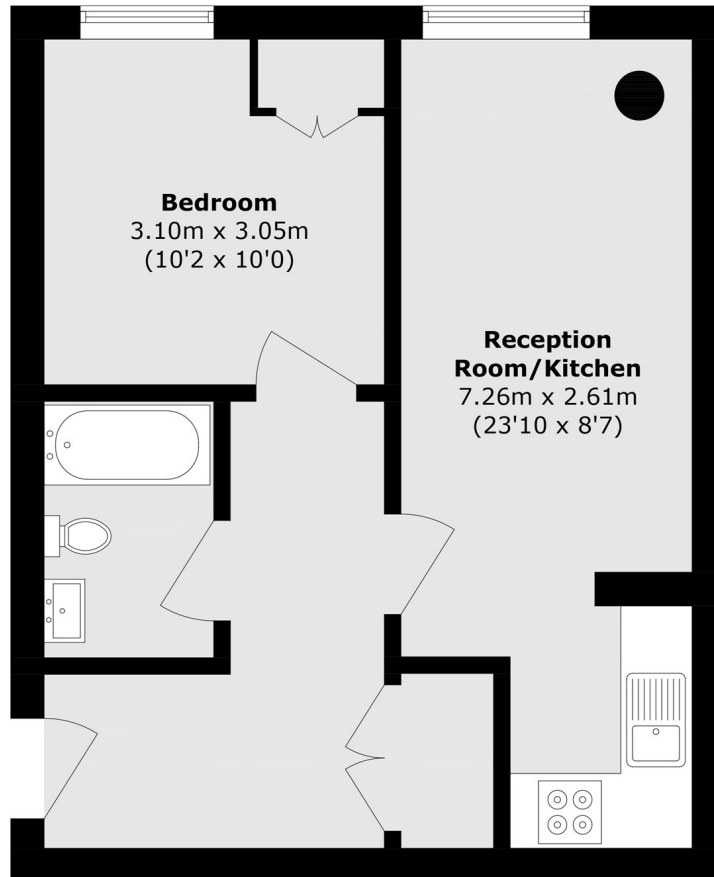
Excellent transport links are on your doorstep, with two nearby tube stations Aldgate East (District, Hammersmith & City Lines) and Aldgate (Circle, Metropolitan Lines).

- One Bedroom Flat • 19th Floor • Low Service Charges •
- EWS1 Compliant • Concierge • No Onward Chain •



Frank Harris

— & Co. —



Total area (approx.): 42.1 sq. m (453.1 sq. ft)

Frank Harris & Co. Barbican and City
87 Long Lane, London,
EC1A 9ET
020 7600 7000
citysales@frankharris.co.uk

Energy Rating: C. We aim to make our particulars both accurate and reliable. However they are not guaranteed; nor do they form part of an offer or contract. If you require clarification on any points then please contact us, especially if you're traveling some distance to view. Please note that appliances and heating systems have not been tested and therefore no warranties can be given as to their good working order.

