

Frank Harris & Co.



Cathedral Lodge, Aldersgate Street, EC1A

£465,000

A good sized one bedroom flat situated on the 5th floor with a south aspect at the rear of the building. With a good sized hallway and storage cupboard, separate kitchen with white cabinets, washing machine, and integrated appliances. The large reception room has a feature fireplace and laminate flooring. The bathroom is fully tiled with a bath/wc and wash basin with fitted storage. The bedroom has fitted wardrobes.



Cathedral Lodge was designed by the RIBA architects Emberton, Franck and Tardrew for the clothing company Steinberg & Sons, originally called Steinberg house. In the 1990's the building was acquired by Barratt homes and converted to apartments.

The London Museum's relocation to the Southern end of the abandoned Smithfield Market is underway, receiving a £180m by the City and London Mayor and is planned to open in 2026 creating new gallery space as well as options for larger events and exhibitions.

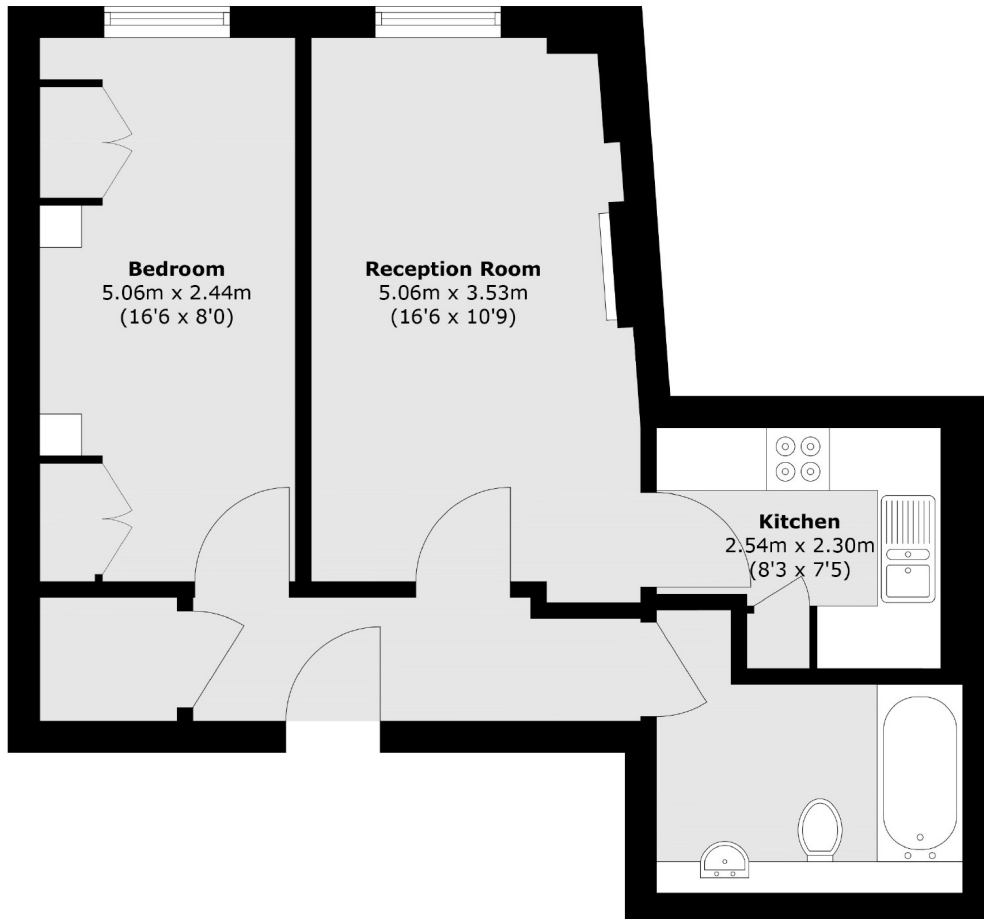
Within walking distance of Barbican and Farringdon station with excellent transport links including the Elizabeth line, Hammersmith and City, Circle, Metropolitan and Thameslink.

- One Bedroom Flat • 5th Floor • Communal Roof Terrace •
 - Daytime Concierge • No Onward Chain • Fitted Storage •
-



Frank Harris

— & Co. —



Total area (approx.): 50.1 sq. m (539.2 sq. ft)

Frank Harris & Co. Barbican and City
87 Long Lane, London,
EC1A 9ET
020 7600 7000
citysales@frankharris.co.uk

Energy Rating: C. We aim to make our particulars both accurate and reliable. However they are not guaranteed; nor do they form part of an offer or contract. If you require clarification on any points then please contact us, especially if you're traveling some distance to view. Please note that appliances and heating systems have not been tested and therefore no warranties can be given as to their good working order.

