

Frank Harris — & Co. —



Andrewes House, EC2Y

£995,000

This bright, third floor one bedroom flat has views towards St. Alphage Garden. With extensive fitted storage throughout this lovely Type 20 has a south facing reception room with fitted units, a contemporary white gloss kitchen with Siemens appliances, a separate wc, ensuite shower room and a bedroom overlooking the lake with further fitted storage. The refurbishment was carried out by Thomson Brothers.



St Alphage Garden is sunk below road level and parts of the Roman City Wall are at its southern boundary. There is seating and numerous flower beds to enjoy a peaceful retreat from the City.

Barbican residents have use of their own private gardens, 24 hour car park attendants, storage cages and parking spaces are available by separate negotiation below the building.

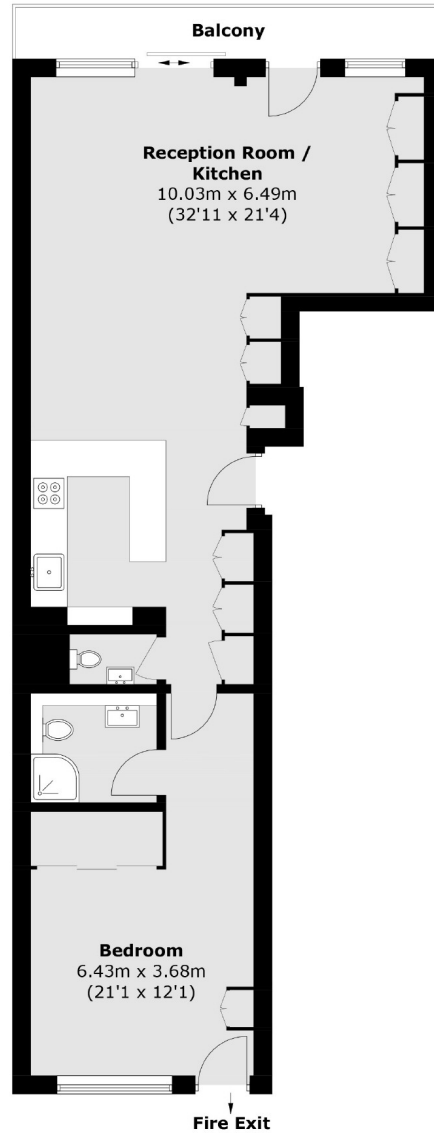
The Barbican Arts Centre provides three on-site cinema screens, restaurants, bars, a concert hall, library and a magnificent conservatory. Walking tours are also available from the centre to discover its rich history.

Within walking distance of Moorgate, Barbican, Farringdon and St Paul's Underground Stations with access to the Central, Circle and Hammersmith and City Lines and the Elizabeth Line, a mere five minutes away.

- One Bedroom Flat • Type 20 • Third Floor •
 - Refurbished Throughout • Siemens Appliances • No Onward Chain •
-



Frank Harris & Co.



Total area (approx.): 72.1 sq. m (776.1 sq. ft)

Frank Harris & Co. Barbican and City
87 Long Lane, London,
EC1A 9ET
020 7600 7000
citysales@frankharris.co.uk

Energy Rating: TBC. We aim to make our particulars both accurate and reliable. However they are not guaranteed; nor do they form part of an offer or contract. If you require clarification on any points then please contact us, especially if you're traveling some distance to view. Please note that appliances and heating systems have not been tested and therefore no warranties can be given as to their good working order.

