

Frank Harris & Co.



Bunyan Court, EC2Y

£750,000

This bright duplex has a good size bedroom at third floor level with a modern shower room, the original teak staircase leading to the south facing reception room with a balcony large enough to hold a table and chairs overlooking the water feature and extensive planting at podium level. The modern kitchen has white cabinets with integrated appliances and an open plan dining area.



Facilities nearby include a large Waitrose supermarket, the Barbican Arts Centre with its three cinema screens, and selection of bars, restaurants and its famous arts centre and conservatory, a Marks and Spencer food and clothing store in Moorgate, and a good selection of shops, bars and restaurants on Cheapside. Bunyan Court was completed in 1972.

Just a short walk to Clerkenwell, Spitalfields with its daily market and a mid week food market on Whitecross Street.

Bunyan Court was named after John Bunyan the English writer and Puritan preacher who is buried in Bunhill fields nearby.

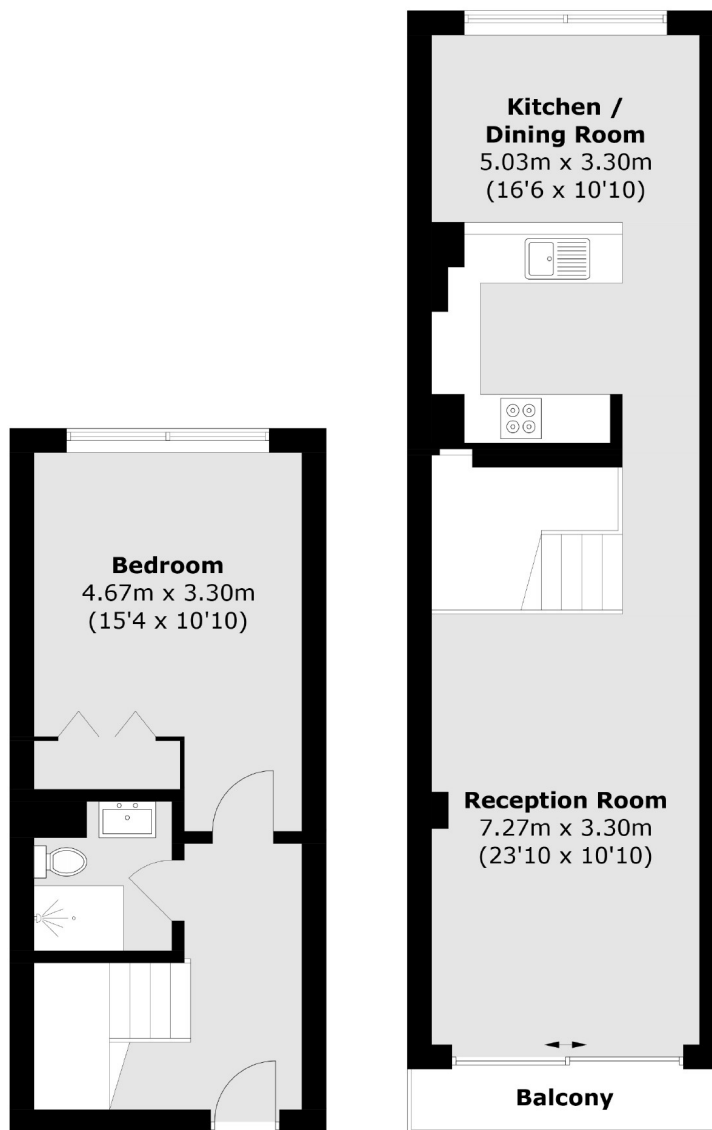
Bunyan Court is ideally located for access to Barbican tube station as well as the Farringdon Elizabeth line station. Residents have convenient access to the Hammersmith & City, Metropolitan and Circle lines.

- One Bedroom Duplex • Type M2A • Modern Kitchen •
- Extended Lease • No Onward Chain • Offers Over £750,000 •



Frank Harris

& Co.



Third Floor

Fourth Floor

Total area (approx.): 68.3 sq. m (735.2 sq. ft)
Balcony: 2.8 sq. m (30.1 sq. ft)

Frank Harris & Co. Barbican and City
87 Long Lane, London,
EC1A 9ET
020 7600 7000
citysales@frankharris.co.uk

Energy Rating: C. We aim to make our particulars both accurate and reliable. However they are not guaranteed; nor do they form part of an offer or contract. If you require clarification on any points then please contact us, especially if you're traveling some distance to view. Please note that appliances and heating systems have not been tested and therefore no warranties can be given as to their good working order.

