

Frank Harris & Co.



Shoreditch, EC1V

£760 Per week

Situated on a high floor, with a south & east facing aspect, a modern one bedroom apartment in the popular Atlas Building. The apartment is spacious and features some incredible views over London. Resident facilities include; gym, pool, spa and cinema.

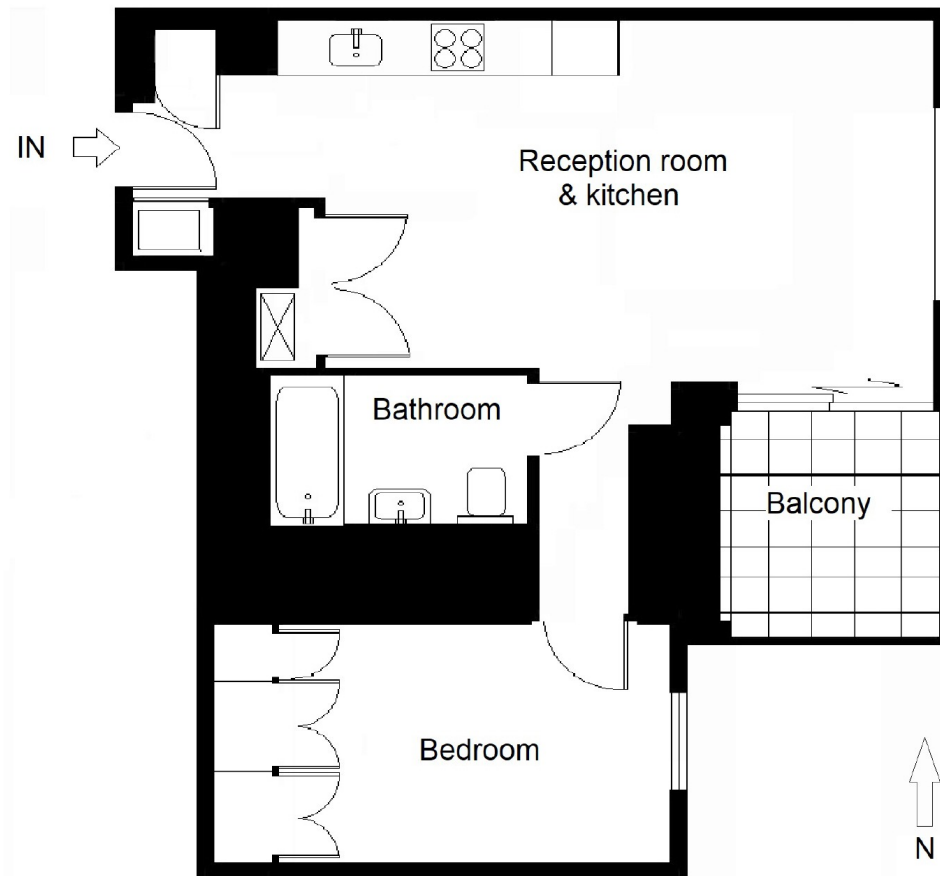
The Atlas Building is well located on the northern fringe of the City of London. Nearest local transport links are at Old Street, Liverpool Street, Moorgate and Shoreditch High Street stations..

- 24 Hour Concierge • Balcony • Gym •
- Swimming Pool • Sauna and Steam Room • Cinema Room •

Frank Harris & Co.

Atlas Building, City Road EC1V

Gross internal area (approx.): 46.1sq.m / 498sq.ft



Typical example or generic floorplan for illustration purposes only. Actual example may vary. NOT TO SCALE. All measurements of rooms, doors and windows are approximate and for identification purposes only.

Frank Harris & Co. Barbican and City
87 Long Lane, London, EC1A
9ET
020 7601 1919
citylettings@frankharris.co.uk

Energy Rating: B. We aim to make our particulars both accurate and reliable. However they are not guaranteed; nor do they form part of an offer or contract. If you require clarification on any points then please contact us, especially if you're traveling some distance to view. Please note that appliances and heating systems have not been tested and therefore no warranties can be given as to their good working order.

