

Frank Harris & Co.



Florin Court, Charterhouse Square, EC1M

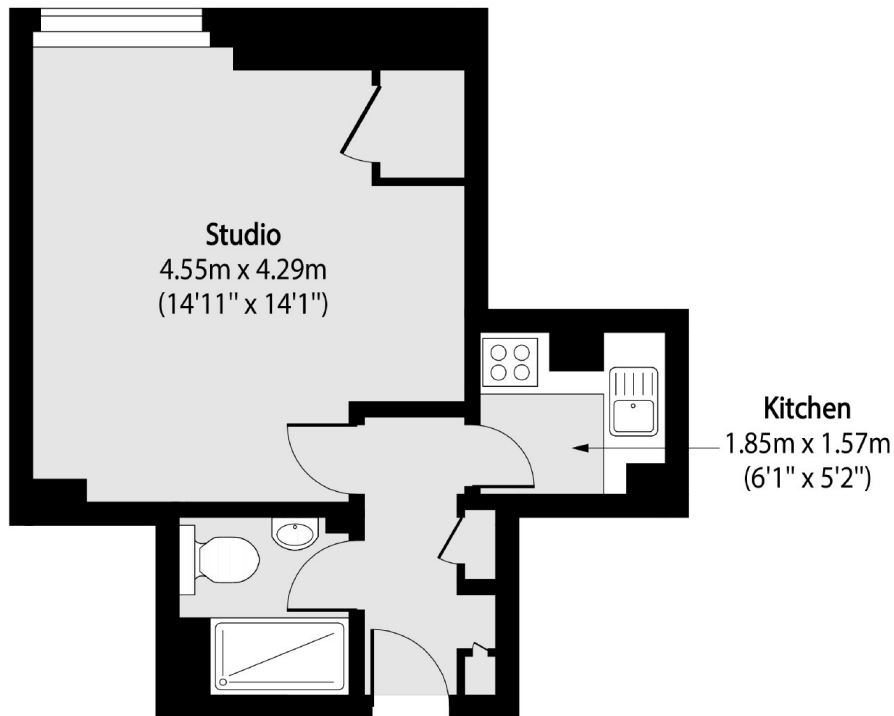
£265,000

Situated at the rear of the property is this bright studio apartment, with a separate kitchenette and a shower room. The building overlooks Charterhouse Square from its communal roof terrace, and there is also a basement swimming pool and gym.

The property is two minutes' walk from Barbican underground station, while Farringdon station on the Elizabeth Line is less than five minutes away, with its links to Heathrow Airport, the West End and Canary Wharf.

- Charming Studio • 8th Floor • Share of Freehold •
- Long Lease • Roof Terrace • Swimming Pool •

Frank Harris & Co.



Total area (approx): 27.31 sq m (294 sq. ft)

Frank Harris & Co. Barbican and City
87 Long Lane, London,
EC1A 9ET
020 7600 7000
citysales@frankharris.co.uk

Energy Rating: . We aim to make our particulars both accurate and reliable. However they are not guaranteed; nor do they form part of an offer or contract. If you require clarification on any points then please contact us, especially if you're traveling some distance to view. Please note that appliances and heating systems have not been tested and therefore no warranties can be given as to their good working order.

