

Frank Harris — & Co. —



City of London, EC1A

£550 Per week

Situated on the first floor of this popular development located on a quiet City side street, this is a well presented one bedroom apartment with a modern interior.



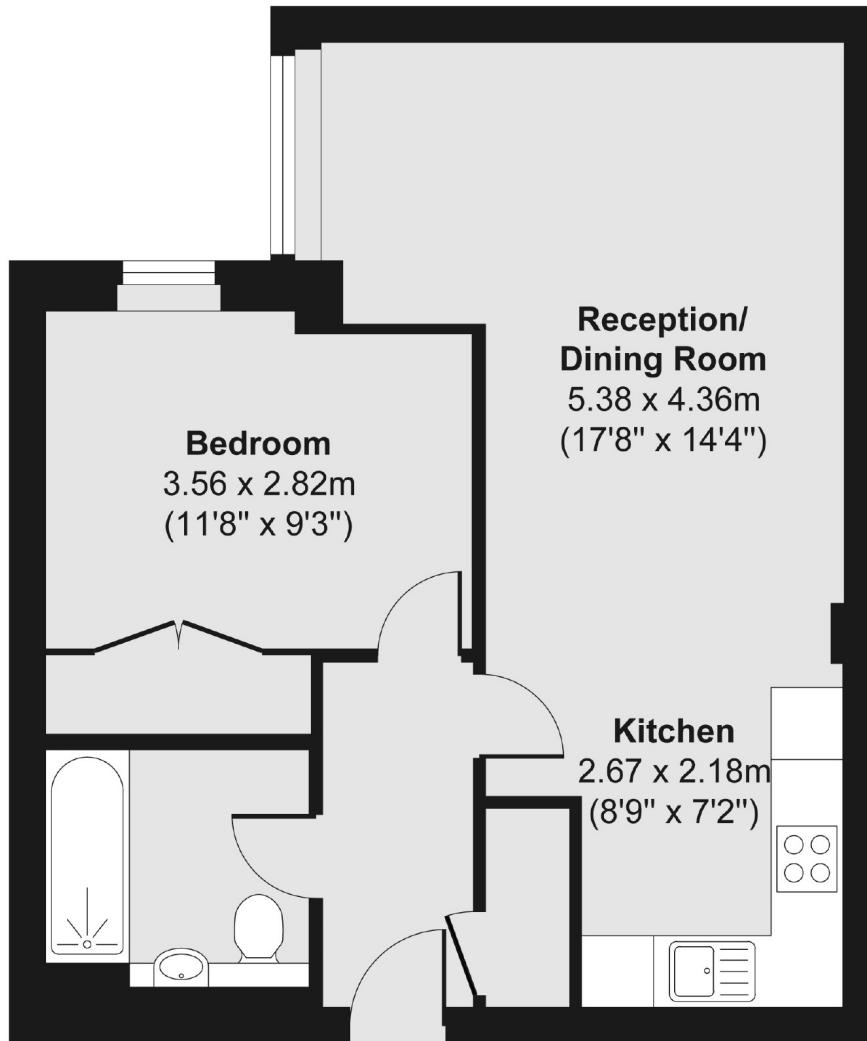
Hosier Lane is just off West Smithfield, in this historic City quarter, with lots of nearby options for public transport to be found at Farringdon, City Thameslink, Barbican and St Paul's stations.

- One Bedroom • Wood Floors & Neutral Decor • Modern Development •
 - Quiet Location • Concierge • Furnished •
-



Frank Harris

— & Co. —



Total area (approx.) 48.66 sq. m (524 sq. ft)

Frank Harris & Co. Barbican and City
87 Long Lane, London,
EC1A 9ET
020 7601 1919
citylettings@frankharris.co.uk

Energy Rating: C. We aim to make our particulars both accurate and reliable. However they are not guaranteed; nor do they form part of an offer or contract. If you require clarification on any points then please contact us, especially if you're traveling some distance to view. Please note that appliances and heating systems have not been tested and therefore no warranties can be given as to their good working order.

