

Frank Harris — & Co. —



Barbican, EC2Y

£1,153 Per week

Highly sought after three bedroom apartment situated on a high floor of one of the Barbican towers, with amazing panoramic views over London. Principal features are the generously proportioned reception room and the balcony running the full length of the apartment.



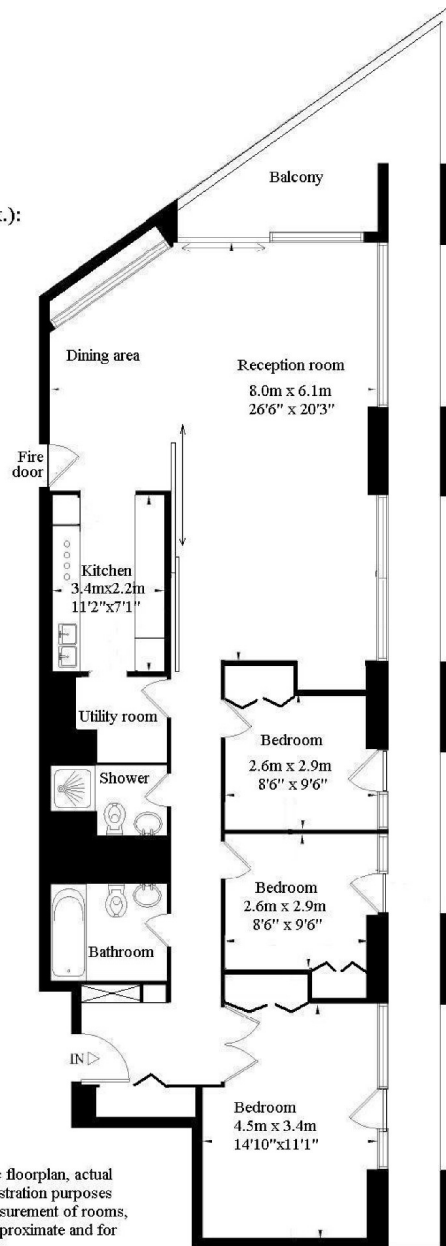
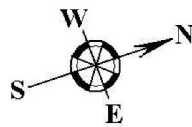
Cromwell Tower is situated at the junction of Whitecross Street/Silk Street/Beech Street close to the local Waitrose and equidistant from the nearest transport links at Barbican and Moorgate stations.

- Three Bedrooms • Two Bathrooms • High Floor •
- Dual Aspect Reception Room • Balcony • Unfurnished •



Frank Harris & Co.

**Cromwell Tower
Barbican EC2**
Gross internal area (approx.):
108 sq.m / 1168 sq.ft.



Typical example or generic floorplan, actual example may vary. For illustration purposes only. Not to scale. All measurement of rooms, doors and windows are approximate and for identification purposes only.

Frank Harris & Co. Barbican and City
87 Long Lane, London,
EC1A 9ET
020 7601 1919
citylettings@frankharris.co.uk

Energy Rating: D. We aim to make our particulars both accurate and reliable. However they are not guaranteed; nor do they form part of an offer or contract. If you require clarification on any points then please contact us, especially if you're traveling some distance to view. Please note that appliances and heating systems have not been tested and therefore no warranties can be given as to their good working order.

