

# Frank Harris & Co.



## Furnival Street, EC4A

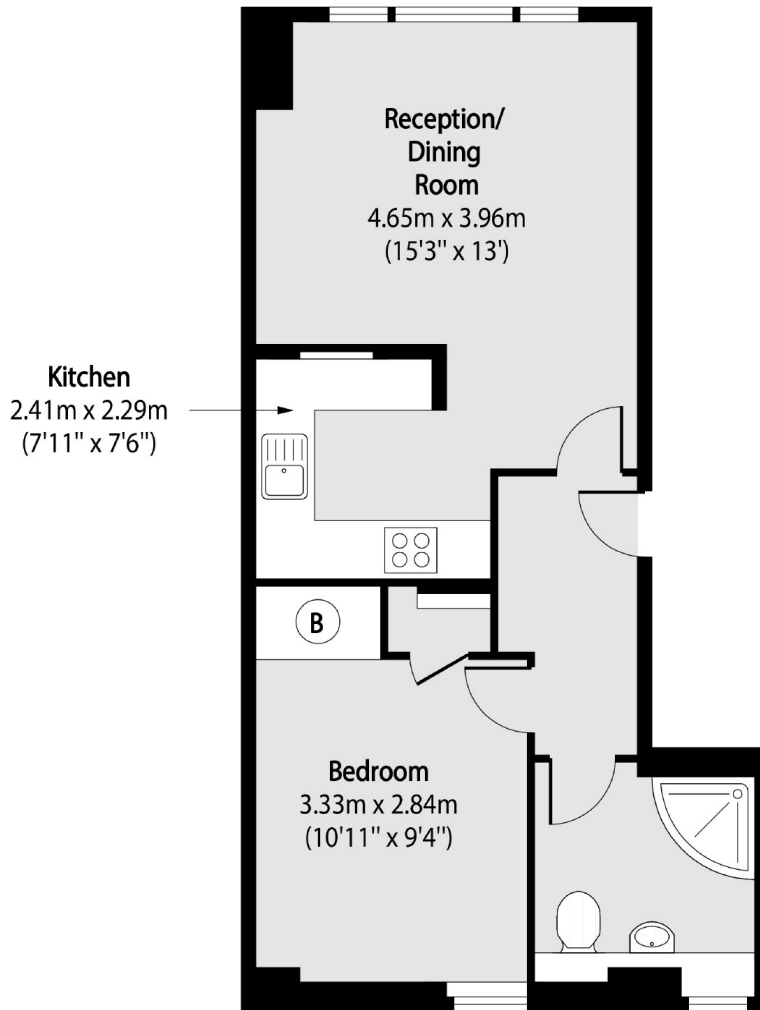
£425,000

A bright, one double bedroom apartment with an open plan, modern fitted kitchen, west facing reception room and recently refitted shower room. The flat has laminate flooring throughout and additional storage in the bedroom.

Situated on a quiet street in London's legal quarter close to Holborn Circus. Fleet Street and the Law Courts. Chancery Lane and the Central Line are just around the corner while Farringdon and the Elizabeth Line are under half mile away.

- One Double Bedroom • Lift Serviced • Close to Chancery Lane •
- Sash Windows • Shower Room • No Onward Chain •

# Frank Harris & Co.



Total area (approx): 41.71 sq m (449 sq. ft)

Frank Harris & Co. Barbican and City  
87 Long Lane, London,  
EC1A 9ET  
020 7600 7000  
citysales@frankharris.co.uk

Energy Rating: C. We aim to make our particulars both accurate and reliable. However they are not guaranteed; nor do they form part of an offer or contract. If you require clarification on any points then please contact us, especially if you're traveling some distance to view. Please note that appliances and heating systems have not been tested and therefore no warranties can be given as to their good working order.

