

# Frank Harris — & Co. —



## Barbican, EC2Y

£675,000

A top floor, barrel roofed, one double bedroom apartment in Frobisher Crescent. With a modern finish throughout, the apartment has, hard wood floors, WC, open plan kitchen/reception room with high gloss units, stone worktops and sliding doors out to the private balcony. In the mezzanine bedroom, there is built in wardrobes, en-suite and views through the circle top window of the City skyline.



Frobisher Crescent was completed in 2010 and benefits from being in a quiet location overlooking the internal Sculpture Court, residents have use of the private gardens and parking below the buildings (a separate charge applies). There is a lift which goes directly down to the Barbican Arts Centre with its Conservatory, Cinemas, Arts Centre, Library and restaurants.

Situated above the Barbican Arts Centre, with full use of the residents Sculpture Gardens and facilities. The closest stations are Moorgate, and Barbican stations both under a quarter mile while Liverpool Street station, shops and restaurants are under half a mile.

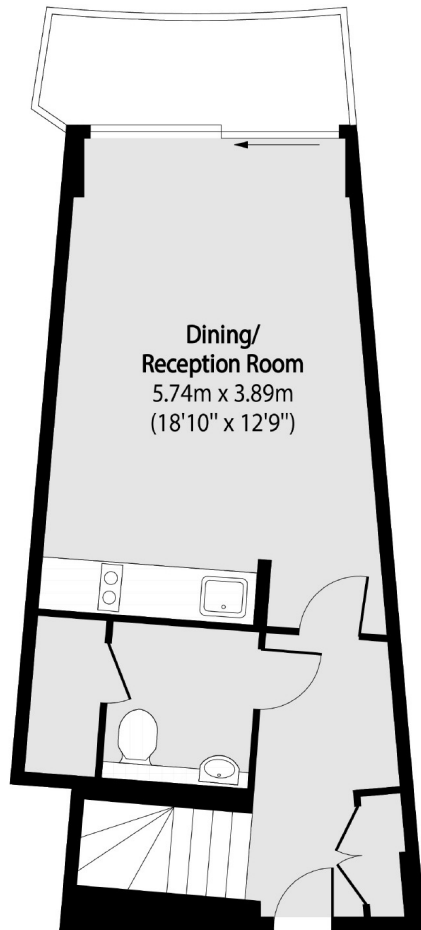
- Barrel Roofed • Mezzanine One Bed • Long Lease •
  - City Views • No Onward Chain • Lift Serviced •
-



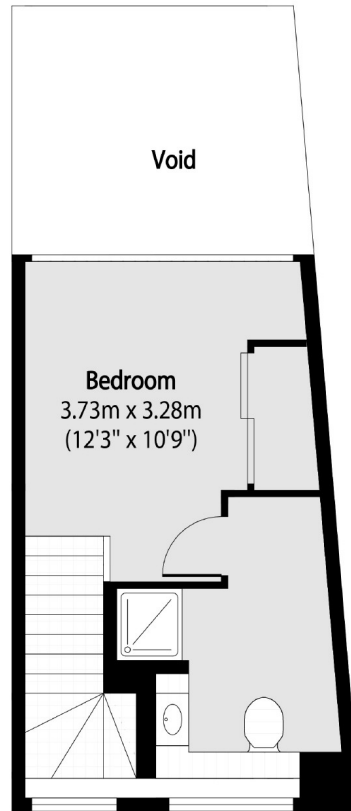


# Frank Harris

## & Co.



**Ninth Floor**



**Mezzanine**

Total area (approx): 53.88 sq m (580 sq. ft)

(Excluding Void)

Frank Harris & Co. Barbican and City  
87 Long Lane, London,  
EC1A 9ET  
020 7600 7000  
citysales@frankharris.co.uk

Energy Rating: N/A. We aim to make our particulars both accurate and reliable. However they are not guaranteed; nor do they form part of an offer or contract. If you require clarification on any points then please contact us, especially if you're traveling some distance to view. Please note that appliances and heating systems have not been tested and therefore no warranties can be given as to their good working order.

